



# REMEMBRANCE SUNDAY



THE ROYAL BRITISH LEGION, BOTTISHAM & DISTRICT BRANCH



## REMEMBRANCE DAY SERVICE SUNDAY 13TH NOVEMBER 2022 at 10.45am IN LODE

**The Bottisham and District Branch of the Royal British Legion** will be holding its Remembrance Day Service this year in Bottisham.

The Remembrance Service will commence at 10.45am outside the Church with the reading of the names at the memorial.

### THE 11th HOUR of the 11th DAY of the 11th MONTH

At 11 o'clock on Thursday the 11th of November, the Nation will pause for the Annual **TWO MINUTES SILENCE** to remember the fallen, including those from recent conflicts. The Bottisham Royal British Legion Branch will hold a brief service of remembrance at the village sign and garden of remembrance, opposite the church in Bottisham, to which all are welcome. Assemble next the village sign at 10.50am.

### LEST WE FORGET, GARDEN OF REMEMBRANCE

The Bottisham Royal British Legion Branch has erected a small Garden of Remembrance, situated by the Village Sign opposite Holy Trinity Church. Anyone who may wish to do so is invited to place a Poppy Cross for personal remembrance. The Garden will be in place from Sunday 30th October until Thursday 17th November. Poppy Crosses may be obtained from any Poppy Seller, from the Community Social Club in Bottisham or the village shop.

---

# Happy November!



Statistically the gloomiest month of the year. With the clocks changed, it gets dark earlier and the days get colder. Never mind, Christmas is round the corner. We know that because Tesco has been selling crackers and big tins of sweets since September!

Sad to see an institution like Rank Bros. closing in Bottisham. The illustrious name will live on in the world of scientific instruments, but the local impact will be lost. I would like to add my recognition of the benefits that this village has had from Rank Brothers over the years. From material support to the BVC, to floodlights and interior lighting for the church, the Rank family leave a great legacy.

While all the pomp and ceremony was going on in London, Bottisham had its own, with Jon Ogborn reading the declaration of the accession of King Charles III. Rosemary Jolley sent me a picture of the event.

Interestingly Jon, where he stands, would be on the left of our cover picture, facing the camera.

Taken, in I guess about 1890, it is of the then village shop looking across to where the vicarage now stands and beyond, that, if it had been there at the time, our house!

The date of the coronation has now been confirmed as Saturday 6th May, and hopefully with enough notice, some sort of Bottisham celebration could be organised. Not maybe at the same time, as everybody will be watching the telly, but that weekend.

Or how about a big village picnic (bring your own lunch!) with a big screen TV, held on the field behind the village college (I doubt there will be football that day, so they won't need it for that use.) Only a thought.

A packed magazine this month with lots to read and interesting articles. Particularly, there will be discussions raised over the proposal by Stagecoach to cut off the lifeline for many people which is the 11 and 12 buses. It should never have been allowed to get to the stage of termination by the company that signed up to run it and this must now be resolved. Both with a short-term resolution, and also a longer term reassurance of maintained service.

I could fill this page with the examples of disorganised idealistic infrastructure planning, from restrictions of only one car space for houses, to cutting down road space to put extra bus lanes in, with fines for transgression. To imposing £5 fines if you take your car anywhere near Cambridge, including Addenbrookes. Yet they allow the only alternative for many to be discontinued at a whim. "You couldn't write the script", as they say!



## *News From Holy Trinity Church Bottisham*

The main news this month is that Rev'd Sue Giles has announced that she will be retiring at the end of January 2023. We are hugely thankful for all she has done during the 10 years she has been in the benefice, (not to mention nearly 40 years in the ministry) and hope her last few months with us bring us all great blessings. We will miss her, her hard work, generous spirit, and many gifts immensely, but appreciate that Sue and Jonathan deserve a very well-earned rest together!

There has been further discussion over the last few weeks regarding the floodlighting of the church. A very generous donor has offered to replace the existing halogen lights with lower wattage LEDs. However, we need initially to replace a single bulb to check that the whiter light from LEDs will provide acceptable illumination compared with the yellow glow of the existing halogen bulbs to which we have become accustomed. If the trial is satisfactory, the LEDs being more energy efficient, then we will have the prospect of having longer lighting hours and more lights on than at present – fingers crossed!

We had a memorable and most enjoyable coffee and cake concert with the folksinger Jancis Harvey on October 1st. We are looking forward to our next one on November 5th, when a very well-known local duo will be performing a programme of songs and words about England entitled "England, our England." Rex Freeman sang his first solo when he was four, entered and won his first competition when he was nine, and has sung as a soloist ever since. He will be accompanied by Rosemary Wheeler who commenced piano lessons at the age of five and has enjoyed a lifetime of making music. When she moved to Cambridge, she became involved with three operatic societies as their rehearsal accompanist. As the accompanist of the Cambridge Gilbert and Sullivan Society for many years she was also privileged to accompany many of the D'Oyly Carte principal singers when they performed in Cambridge. The final concert this year is on December 3rd, when I will give a talk entitled 'The History of our Christmas Carols', play my violin and will be joined by Sarah Maxwell (soprano) and Jonathan Giles (keyboard). I will outline the history of how we came to sing the now traditional carols at Christmas, as well as describing how the words and music, often written hundreds of years apart, came together. We will all sing a few verses of each carol together, as well as listening to Sarah's lovely voice. Put the dates in your diary now. The concerts will start at 10.30am, last just over an hour and entry will be £5 (children free), to include coffee and cake. All are welcome. Money raised will go towards the church building fund.

Julie Bristow is planning two candlelit concerts with her choir in the church on 10th December. There will be an afternoon concert at 4.30pm aimed at the elderly, those in the local care homes and those who do not wish to come out at night and an evening concert starting at 7pm. There will be a charge of £10. Money raised will go to local families who may be struggling at Christmas.

We have received quotes for the repair of the holes in the church roof which will cost in excess of £5,000, which will have to be met from our own church funds and individual donations. This comes at a time when our electricity costs have increased enormously, with estimated costs for heating for a church service around £100 and for a funeral £140.

## Contents

Services in the Anglesey Benefice.....5	Community Library.....29
WI.....5	Community Herb Bed News.....31
District Councillors' Report.....7	Public Transport Matters.....33
Cambridgeshire	
County Council Report.....9 & 11	News from Wicken Fen
This A to B1102 Report is correct at	Nature Reserve .....35
the time of going to press .....11	Reasons to be Cheerful... ..37
A Report From District	Bottisham Bowling Club .....39
Councillor Charlotte .....13	Bottisham and District
Parish Council Report.....15 & 17	Gardening Club .....41
Planning Notes .....17	Letter .....41
The Performing Arts	Thoughts of a Sports Nut.....43 & 45
in Bottisham .....19 & 21	Jolley Old World.....47 & 49
Anglesey Group Mothers' Union.....21	East Anglian Air Ambulance.....51
Anglesey Abbey .....23	Anglian Leisure Bottisham .....53
News from Bottisham Medical Practice	
Patients' Participation Group ..27 & 29	

Our toddler group for children and their parents continues to be held on a Tuesday morning – anyone is welcome to join us. Permission has now been obtained from the Diocese for permanent removal of some of the now unfixed north aisle pews and this will give us a more versatile space.

We are expecting a number of visiting bellringing teams over the next couple of months and so you may hear them ringing at unfamiliar times.

Our Sunday services continue, in all the churches in the Anglesey Group and also on Zoom. You will be very welcome at any of them. There are usually two services per month in Bottisham at 10.30am on the first and third Sundays of the month. Please consult the Cresset or the church notice board for exact details.

*Stuart Field, Churchwarden*

## Rank Brothers, Bottisham - Thank You

Back in my distant biochemical days in the University of Warwick I worked on mitochondrial respiration. A key part of this was a small incubation chamber with an integral electrode for measuring the oxygen content of the medium. We reckoned that it was the best you could buy anywhere in the world. The device had a label with the maker's name stuck on it: Rank Brothers, Bottisham. Little did I guess then that not only would we finish up living in Bottisham, but that I would get to know the Rank Brothers, Ed and Albert, very well. Sad that everything must come to an end, or at least change, but thank you, Rank Brothers, Bottisham, for a helping hand through life. I am surely not alone.

*Mike Young*



## Reconnect to your life

Whatever your hearing difficulty, angli-EAR Hearing uses the most up-to-date tests and equipment to find the best solution for you.

Where to find us:  
Audiology House (Cambridge)  
15 Woollards Lane  
Great Shelford  
Cambridge  
CB22 5LZ

Book your  
**FREE**  
ear health  
check today

**Independent audiology  
experts you can trust**



**Hearing  
Assessments**



**Ear Wax  
Removal**



**Hearing  
Aids**



**Tinnitus  
Solutions**



**BOOK ONLINE**

**[www.angliearhearing.co.uk](http://www.angliearhearing.co.uk)**



**01223 661399**

[info@angliearhearing.co.uk](mailto:info@angliearhearing.co.uk)

## *Services in the Anglesey Benefice*

<b>Wed Nov 2nd</b>	<b>8 pm</b>	<b>C by C</b> (a short contemplative service) – online via Zoom
<b>Sun Nov 6th</b>	<b>9am</b>	<b>Online service</b> on Zoom
	<b>10.30am</b>	<b>Holy Communion</b> - Bottisham
	<b>4 pm</b>	<b>Village Worship</b> - Quy Village Hall
<b>Sun Nov 13th</b>	<b>9am</b>	<b>Online service</b> on Zoom
	<b>10.50am</b>	<b>Royal British Legion service</b> – Lode
		<b>Remembrance services</b> at Quy, Swaffham Bulbeck, Swaffham Prior
<b>Sun Nov 20th</b>	<b>9am</b>	<b>Online service</b> on Zoom
		<b>Morning Prayer</b> - Quy
	<b>10.30am</b>	<b>Holy Communion</b> , Swaffham Bulbeck
		<b>Morning Prayer</b> - Bottisham
<b>Sun Nov 27th</b>	<b>9am</b>	<b>Online service</b> on Zoom
	<b>10.30am</b>	<b>Holy Communion (BCP)</b> - Swaffham Prior
<b>Every Thursday</b>	<b>10.30am</b>	<b>Holy Communion</b> - Lode

Please check the Church notice board for current information;  
or email [admin@angleseygroupparishes.co.uk](mailto:admin@angleseygroupparishes.co.uk),  
which is also the address to request the Zoom link.

**WI**

We held our Annual meeting in September and were reminded of all our activities during the past months. In common with Institutes throughout Cambridge and indeed the rest of the Country, member numbers have reduced resulting in lower income. However, our finances are healthy and with the return to Tuesday evening meetings in the New Year we may welcome more members. The committee were warmly thanked for serving in the past year and especially for the Queens Platinum Jubilee Lunch.

Susan Merish is standing down as Treasurer but Jean Turney will replace her. All other members were adopted.

We shall be making a collection nearer Christmas time for the Salvation Army and cuddly toys, small stocking filler gifts and wrapping paper and Sellotape have been suggested. Toiletry gift packs for single mums and older children in care are also needed.

**Our next meeting is Wednesday 16th November when Charles Bradford will be talking about The Gog Farm Shop**

Meetings are held at 7.30pm in the Poppy Room. Hope to see you there. *Sylvia Overton*



Fresh Flowers for All Occasions - Your local FLOWERIST

bouquets : weddings • funerals • workshops • parties • events

[www.millblossomflowers.com](http://www.millblossomflowers.com)

email: [millblossomflowers@gmail.com](mailto:millblossomflowers@gmail.com)

Tel: 07749 770286

Support local small business

33 Mill Road, Lode, CB25 9EN

## SN Handyman Services

A friendly and reliable service for all  
your general home and garden maintenance.

- ▶Painting & Decorating (interior/exterior) ▶Garden Maintenance ▶Tiling & Glass  
Splashbacks ▶Gutters Cleared & Repaired ▶Power Washing Patios ▶Sealant  
Replacement (bathroom/kitchen) ▶Curtain Poles & Blinds
- ▶Flat Pack Furniture (assembly) ▶Shelf Fitting ▶Small Glazing
- ▶Conservatory Cleaning ▶**and more...!**

**Free estimates & advice given on all work**

References available upon request.

**PLEASE CALL**

**Steven Newton** ▶07713 859712 ▶01223 813701

50 Commercial End ▶ Swaffham Bulbeck ▶ CB25 0NE.



## *District Councillors' Report*

Buses have been the main talking point for residents and politicians alike, since Stagecoach announced that despite taking Government money to sustain local bus routes still affected by the Covid passenger downturn, they were going to close large numbers of local routes anyway. These include the 11 & 12 services. With these services due to close on 30 October (all the notice Stagecoach have to give) the Mayor's Combined Authority—which is the public transport authority for Cambridgeshire & Peterborough - has launched a procurement with £1.7 million on offer to fill as many of the gaps as possible from the date on which Stagecoach leaves them until the end of March 2023. The Combined Authority Board will meet on Wednesday 19 October, when it will reach a decision on the outcome of the procurement. The County Council's Strategy and Resources Committee will meet on the 20 October where they can consider providing additional financial support if the Combined Authority's funding is insufficient. It is understood that there is a company who wants to run buses on the number 12 route, and we wait to see if a company has tendered for the number 11 route. Beyond March 2023, the Combined Authority will be making decisions on bus services as part of its annual budget and business planning process.

The actions of Stagecoach have shown that the current system - in place since the mid 1980s - where commercial operators compete for money-making routes, leaving local authorities to fund the loss-making but socially necessary routes, is unsustainable. So we hope the Combined Authority moves forward quickly with proposals to develop a reliable public transport network for Cambridgeshire. Ideally this would include franchising of bus routes, where profitable and unprofitable routes are bundled together to avoid the current cherry-picking.

On Monday 17 October the Greater Cambridge Partnership Board will launch the public consultation on its proposals for significant bus expansion over the next four years, paid for by a charge on driving in Cambridge from 2027. A set of exemptions, discounts, and refunds is also proposed in a number of circumstances. We will give details of the consultation in our next Newsletter, or you can check [www.greatercambridge.org.uk/get-involved/consultations-on-consultcambs](http://www.greatercambridge.org.uk/get-involved/consultations-on-consultcambs) from Monday. The consultation closes on 23 December.

The cost-of-living crisis sees to get worse, rather than better. Gas and Electricity prices have been capped but we await details of the promised help for those of us on oil, lpg etc. Food prices keep going up and mortgages and rent are increasing. The County Council is collating information about the various sources of help for individuals and households struggling with the cost of living crisis. [www.cambridgeshire.gov.uk/council/communities-localism/support-with-the-cost-of-living](http://www.cambridgeshire.gov.uk/council/communities-localism/support-with-the-cost-of-living)

We know not everyone has access to on-line information and recommend that they contact Newmarket Citizens' Advice Bureau (CAB) on 0808 278 7868, Cambridge CAB on 0808 278 7808 or East Cambs Housing and Community Advice Service on 01353 665555.

Our next Surgery is on Wednesday 23 November 6.30-7.30pm at Swaffham Prior Village Hall.



## The Little Beauty Room

•Based in Bottisham•

•07592 166489•

Services include • Nails • Waxing • Massage •

### Stitchshed Sewing

(Formerly Little Stitches)

#### Repairs and Alterations

I am based locally and can help you with clothing alterations & repairs, curtains, blinds and cushions

#### Sewing Classes

If you wish to learn to sew, then please call for a chat.

Classes at the Stitchshed or private home tuition available for:

Dressmaking  
Patchwork and Quilting  
General craft sewing

Getting to know your sewing machine!

**Tel:** 01638 745160

**Mobile:** 07449 954590

**Email:** [stitchshed@gmail.com](mailto:stitchshed@gmail.com)

**Web:** [www.stitchshed.blogspot.com](http://www.stitchshed.blogspot.com)



Passage Hall, Lode

*A calm, child led  
environment  
where children  
learn through  
meaningful play.*

- Montessori Preschool For children aged 2-4 years
- All types of government funding accepted
- Experienced, highly qualified staff.
- Using the Montessori method of education
- Weekly Forest School sessions

#### GET IN TOUCH:

07572 121463

[littlelegsmontessori@gmail.com](mailto:littlelegsmontessori@gmail.com)

[littlelegsoflode.com](http://littlelegsoflode.com)

#### OPENING TIMES

Monday and Wednesday  
9am-3pm

Tuesday, Thursday, Friday  
9am-12.30pm

# *Cambridgeshire County Council Report*

## **BUS SERVICES**

The major topic of issue has been the withdrawal of 18 routes across Cambridgeshire, which affects the route numbers 11 and 12 locally, and is due to happen on 30th October.

The mayor of the Cambridgeshire & Peterborough Combined Authority (CPCA) is the Transport Authority for Cambridgeshire and came into office with the promise of improving the bus services across the County.

Earlier this year, the mayor failed in his bid to Government for funding for improved bus services within the County as the Government viewed his application was not ambitious enough. As an example, Norfolk County Council received £49.5m. Little has been progressed on buses since and we are left with the situation that we find ourselves in.

Stagecoach is losing substantial money on those 18, about £4.7m and have been for several years, but they have been subsidised by the more profitable routes.

I have lobbied Highways & Transport Committee members on Cambridgeshire County Council who did respond, but with no real help, and lobbied the Chair of the Greater Cambridge Partnership (GCP), but with not even the courtesy of a response.

I have attended meetings with the A2B 1102 Group and with Newmarket Town Council and Suffolk colleagues to discuss what we can do on this situation.

The mayor has re-tendered the routes that are being withdrawn and the results of that tender exercise will be known on Wednesday 19th October and has offered £1.7m from unspent reserves to keep the services running in the short-term.

On 30th September, the Conservative Group on the Strategy & Resources Committee, which is the major decision-making committee at the County Council and which I am a member of, made a proposal to match the sum of £1.7m that the mayor was promising and ask the Greater Cambridge Partnership (GCP) to put in the same. This would have made £5.1m to save these services in the short-term, but the Lib-Dem ruling group on Cambridgeshire County Council rejected our proposal.

Our group was looking to get a short-term fix to allow a longer time to get a long-term solution.

There is a meeting of Strategy & Resources on 20th October, where the decision not to fund the shortfall may be re-considered depending on the outcome of the re-tender exercise.

I am a member of the Overview & Scrutiny Committee of the CPCA and at our next meeting on 17th October, the mayor is answering questions of members. I have tabled a question on bus services and will update at a later stage with the answers received.

This decision affects a considerable number of people, as I know from my role as Co-Chair of Governors at Bottisham Village College and the effect these closures could have on students, staff and parents getting to the College

## **CONGESTION CHARGING**

The GCP have agreed to consult on implementing a £5 congestion charge between 7am and 7pm on weekdays across the Greater Cambridge area, which would include Addenbrookes.

There would be an efficient bus service costing £60m to run in Cambridge and the surrounding areas.

*Continued on page 11*

# SG LAW

Plumbing & Heating Services

Cambridge based plumbing,  
heating and specialists in  
bathroom installations

## Services include

- Plumbing
- Heating & Servicing
- Bathrooms
- Commercial

T: 01223 812280 M: 07747552232 E: [hello@sglawplumbing.co.uk](mailto:hello@sglawplumbing.co.uk) [www.sglawplumbing.co.uk](http://www.sglawplumbing.co.uk)

## Saffron Salt Supplies

### Water Softener Salt

Salt tablets in 25 or 10kg bags

Block salt in 2x4kg packs

### Dishwasher Salt

Granules in 10kg bags

### De-Icing Salt

White crystal in 25kg bags

delivery **FREE** to your door  
visit our website for full listing

[www.saffronsalt.co.uk](http://www.saffronsalt.co.uk)

Place your order by phone

**07980 581815** or email

[info@saffronsalt.co.uk](mailto:info@saffronsalt.co.uk)



## N.C.S.

**BRUSH ELECTRIC SWEEP  
ALL CHIMNEYS SWEPT**

- BIRDS NESTS REMOVED
- OIL & GAS BOILERS
- SOLID FUEL, STOVES FITTED
- SMOKE PRESSURE TESTING
- INSECT MESH, POTS, COWLS
- FLUE LINERS SUPPLIED & FITTED
- BIRD GUARDS & TERMINAL FITTED
- GUTTERS CLEANED & REPAIRED
- GENERAL PLUMBING WORK

**FOR FREE QUOTE CALL  
07824 727277 or 01638 662760**

EMAIL  
[NCS.NEWMARKET@YAHOO.CO.UK](mailto:NCS.NEWMARKET@YAHOO.CO.UK)

WEBSITE  
[www.ncsnewmarket.co.uk](http://www.ncsnewmarket.co.uk)

\*Send text or e-mail for 10% discount  
Answers within an hour. • Waiting time approx. 1-2 weeks

**VERY CLEAN • Public liability insurance  
- Competitive rates -**

The service would be funded by the Congestion Charge and fares, which will be low. There is no financial detail yet and I have great doubts as to how the figures will stack up.

The consultation will commence soon, and I would ask residents to get involved and give your thoughts. Any final decision will need to be agreed by a Full Cambridgeshire County Council.

I will continue to lobby for my residents to get the best possible Transport service in our area.

**I am elected to represent residents and I will continue to do that, but if there is anything that concerns you, please contact me and I will try to fix it.**

**If any resident wants to meet me to discuss any issue, then please feel free to contact me. I want to hear comments from everyone, as that is the only way that I can truly represent you.**

*Alan Sharp Cambridgeshire County Councillor – Woodditton Division*

*Tel: 01638 507485/ 07794292941*

*E-Mail: Alan.sharp@cambridgeshire.gov.uk*

---

## ***This A to B1102 Report is correct at the time of going to press***

---

As you may be aware that on the 20th of September Stagecoach announced that the Number 11 will cease to run through the village and the Number 12 will cease to run as well. A to B1102 has been active to try and prevent our Village's from being cut off by this withdrawal. Firstly a meeting was convened by the chair of our group with Alan Sharp (County Councillor) and with Charlotte Caine (District Councillor) and many other Councillors and the principle of Bottisham Village College to try and create an action plan. It was announced by the chair of our group Johnathon Cook that both he and Emma Fletcher would use their Forthcoming meeting with Stagecoach to discuss this matter. So on the 30th the prearranged meeting with David Boden took place.

It was revealed that the 11 was viable coming from Cambridge but then after it crosses the A14 it then becomes loss making. Although during the peak periods (before 9am in the Morning and after 3.30pm) it covers its costs. So the decision was to cease the service on the 30th of October. The number 12 is a different story.

The mayor of Cambridgeshire and Peterborough put both bus franchises out to tender it was the 12 that attracted Stephenson's of Essex to rescue the service. The company already run a non-stop service From Bury to Newmarket and was willing to extend the service to Cambridge. It is important to say this will be non-stop. The chair of our group and Emma Fletcher are seeking a meeting with Stephenson's to see if this bus could stop at the bus stops at the first copy Entrance ( what used to be the white swan). Just to pick up and to drop off. There has been as yet no agreement on this. Everyone including Councillors and A to B1102 are trying to be proactive in trying to come up with an alternative that works for all the villages affected by the withdrawal. There are meetings going on up to the 30th of October and hopefully when you read this there will be an alternative in place.

*Steven ODell*



# FOUR SEASONS

PROFESSIONAL TREE SERVICES

Qualified & Professional Tree and Client Care

PRUNING ♦ LOPPING ♦ FELLING ♦ PLANTING ♦ REDUCING & RESHAPING  
CROWN RAISING ♦ HEDGETRIMMING ♦ THINNING ♦ POLLARDING ♦ STUMP REMOVALS  
OVERGROWN GARDENS PUT BACK IN SHAPE ♦ FRUIT TREES TREATED  
LOG & WOODCHIP SALES

FREE ESTIMATES & ADVICE WITH NO OBLIGATION

For quality jobs at a competitive price call:  
01353 721665 – Mob 07771707921

All work carried out to BS 3998 Standard  
A genuine family business est. for over 30 years – Fully insured

The Name you can trust.  
We offer a 7 day cooling off period

## WANTED

**ALL TYPES OF ANTIQUES, CURIOS & COLLECTABLES  
POLITE, LOCAL BUSINESS EST. OVER 25 YEARS  
IS LOOKING TO BUY THE FOLLOWING:**

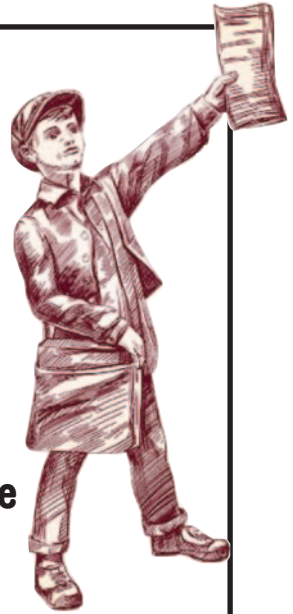
- Old watches, clocks, scientific instruments
- Quality jewellery, costume jewellery, even items in need of repair
- Silver, silver plate, old copper & brass
- Glass, ceramics, china
- Militaria, weapons, medals, badges, uniforms, paperwork & photos
- Tribal art – masks, weapons
- Walking canes, sword sticks
- Sporting memorabilia
- Old toys, games and train sets
- Vinyl albums and singles
- Woodworking tools
- Furniture – antique up to 1970s

**Anything considered – give me a call before you throw it away  
POLITE & CONFIDENTIAL SERVICE. GOOD PRICES PAID.**

**STEVE DURRANT 01638 507037 OR 07740 591194**

**Email: [svdservices51@gmail.co.uk](mailto:svdservices51@gmail.co.uk)**

# **CRESSET DISTRIBUTION TEAM**



**We are looking for teams of two people to volunteer to help with the distribution of the Creset.**

This involves putting the magazines into bundles and delivering them to the many volunteers that deliver them to individual households.

The teams would work on a rota with our other distributors, meaning the work would only occur once every 4 to 5 months.

**If you would like to be involved and think you could help, please contact Ian Cole on 01223 812573 or email [i.h.cole@btinternet.com](mailto:i.h.cole@btinternet.com)**

# REFLEXOLOGY

For Health and Vitality

Reflexology has been  
an effective treatment for:

- Migraine • Back Pain • Infertility • Arthritis
- Sleep Disorders • Hormonal Disorders (Including PMT) • Sports Injuries • Digestive Disorders • Relaxation • Stress Related Conditions (exams, work, home, life) • Little people in nappies! (BabyFlex) • Men and Women, young and old.

**Jennie A Fatibene** MAR MBFVEA  
Tel: 01223 811045

**\*\* Gift vouchers available \*\***



An accountancy  
service that covers  
everything your  
business needs

For more details contact Paul on

**E** [info@cb25accounting.co.uk](mailto:info@cb25accounting.co.uk)

**M** 07803 782423 **f** [cb25accounting](https://www.facebook.com/cb25accounting)

## BURWELL COMPUTERS

SUPPORT • SALES • REPAIRS

**01638 505930**

**07901 556895**

[support@burwellcomputers.co.uk](mailto:support@burwellcomputers.co.uk)  
[www.burwellcomputers.co.uk](http://www.burwellcomputers.co.uk)



Sales, servicing, repairs and sharpening  
of all types of garden machinery.

Collection and delivery available.

Friendly, local and professional service.



**C.W.KIRK LAWMOWERS**

01638 744 349

**CWKIRKLAWNMOWERS.CO.UK**

44 NEWMARKET ROAD BURWELL CAMBRIDGESHIRE CB25 0AE

## *Parish Council Report*

I am sure that everyone in the village is aware that one of the biggest challenges for the Parish Council has been the task of developing a Play Area within the village (a very difficult matter to resolve). Underlying this is the fact that the only land actually owned and managed by the Parish Council is the Cemetery!! We must remember that there is a significant amount of open space around the village, not least the grounds and sports facilities at the village college - which are a real benefit to residents. However the dearth of play equipment (especially for use by pre-school children during school hours) has been highlighted in formal surveys undertaken in 2011 and 2017, and informally, in the comments made by concerned residents. Having grandchildren of my own, I am more than aware of the need and, like many residents, often visit neighbouring villages to use their superior play areas.

So what facilities are there currently? The Parish Council holds a license from Anglian Learning permitting use of the play equipment in the grounds of Bottisham Primary School outside school hours and during holidays, when the facilities are not otherwise in use. Apart from this, there is a small Play Area within the Ox Meadow development. Following the survey in 2017, a resident's working party was set up and this identified two areas as having potential to fill this need. The preferred option was the Dirt Hills, an area of land adjacent to the Primary School. This land is privately owned by the Park Estate Residents Association, who decided that they did not wish to make the land available for this purpose.

The other option was the open space within the Ancient Meadows development, which is owned by East Cambridgeshire District Council (ECDC). The Parish Council was advised that, prior to any decision by the Finance and Assets Committee of ECDC, the residents of Ancient Meadows would need to be consulted. This was carried out during the summer and the vast majority of respondents did not support having such a facility in this location. The anonymised details of the responses have now been shared with ECDC and we have asked for their views in light of those. If ECDC are not willing to provide land for use as a play area, we have asked if they would consider releasing S106 and CIL monies to assist the village in purchasing land. Past surveys also indicated a desire from residents for a larger play area serving a range of ages - which could not be achieved on the land currently available.

But there is positive news that not everyone may be aware of, which is that the Council has secured a commitment to the building of a new pre-school play area off Bell Rd. This is a reserved matter within the planning consent given for the pending development of 50 new homes to the south of Petersfield. This will help serve the growing number of young families in that area and will benefit other residents too.

Another major challenge for the village has been the decision by Stagecoach to cease operating the 11 & 12 bus services. These are vital for residents and those who travel in to study and work in the Village College. As I write, much work is being done to secure services beyond 31 October. While I don't know the outcome, what I can say is that this has galvanised a lot of people and organisations to work together. We are grateful for the way in which an important local organisation (the A to B1102 Group) has brought together the

*Continued on page 17*

## **PREMIER INVESTMENT MANAGEMENT SERVICES LTD**

INDEPENDENT INVESTMENT ADVISERS Authorised &  
Regulated by the Financial Conducts Authority

Specialist in Isa's & Isa Transfer's  
Investment Planning & Portfolio Management

To arrange a free consultation ring **01223-882422** or email  
**pims@globalnet.co.uk** or visit **www.pims-uk.com**



**“Nesslands of Burwell”**



Your local Dog Kennels, Cattery and Doggy Day Care!  
Delivery and Collection Service Available !

Fully Licensed by ECDC and Veterinary Inspected.  
Ness Road, Burwell. CB25 0DB [www.nesslands.com](http://www.nesslands.com)

**Call Tim or Anya on 01638 720623**



# **BOTTISHAM**

## **SCHOOL OF MOTORING**

**Tel: 811556**

*All qualified instructors  
with extremely high  
1st time pass rates*



interests of the villages in East Cambridgeshire linked by the B1102, including Bottisham. Both the Parish Council and the Village College are linked into the group, which is very effectively engaging with the Combined Authority for Peterborough and Cambridgeshire, which has responsibility for transport issues. I also wish to record my gratitude to our County Councillor, Alan Sharp, and to our District Councillors, Charlotte Cane and John Trapp, who are working very hard to secure a good solution for us.

The Churchyard path is an important route for people walking around the village. Part of the path has broken up since last winter, making it more risky to walk on. The Parish Council has had responsibility for maintaining the Churchyard since it was closed for burials more than 100 years ago, and has arranged for this section of the path to be resurfaced. I trust you will agree it is a great improvement.

I have frequently mentioned our need for more people to join the Parish Council and am delighted that Jawahar Swaminathan was co-opted onto the Council on 3 October. That means that 10 of the 12 seats on the Council are now filled. Please let me know if you would be interested in filling one of the two that remain.

Finally, you will see elsewhere in this month's Cresset a request for help in distributing the magazine. I would like to recognise and thank Peter Walker (Editor) and all those who contribute to and distribute The Cresset - a great source of village information, as well as being a good read.

If you could give The Cresset team some of your time, it would be greatly appreciated and would give you the satisfaction of making a real and positive contribution to village life. Just ask anybody who helps at the moment.

*Jon Ogborn - Chair of Parish Council*

## ***Planning Notes***

### **A) NEW APPLICATIONS**

22/01057/FUL – Howgar House, 41 Bell Rd CB25 9DF

Construction of 2, 2 bedroom, 2 storey semi-detached dwellings with garages and additional parking.

22/00936/TPO & 22/01133/TRE – adjacent to 133 High Street, CB25 9BB

T1Conifer, Prune to give 2m. clearance from property/ G1Beech, prune to give 1.5m clearance from garage

22/01157/VARM – Site to south and east Ox Meadow, Bottisham

To vary condition 11 (Landscaping) of previously approved 21/00984/RMM for Approval of Reserved Matters application for access, landscaping, appearance, scale and layout of 16/01166/OUM for outline planning application for residential development of up to 50 dwellings, new vehicular and pedestrian access from Ox Meadow, public open space including allotments and associated infrastructure

### **B) PLANNING APPLICATIONS APPROVED BY ECDC**

22/00835/FUL – Northfield Farm, Lode Rd, Proposed replanning of internal space in existing office building

22/00858/FUL- 14 Beechwood Ave, Single storey extension and alterations

22/00907/FUL – 20 Beechwood Ave, 2 storey side extension with new pitched roof to garage

22/00897/FUL – Poplar Lodge, 141 High Street, Install 7 solar panels to roof



**LOCKSWIFT CAMBRIDGE SERVICES 24/7**  
Security expert's local to you 24/7

**Emergency Callout**  
**07989 954682**



## PROFESSIONAL SECURITY SERVICES



LOST OR BROKEN KEYS



LOCK REPLACEMENTS



GAINING ENTRY



LOCK CHANGES

# YOUR PERSONAL WEALTH. OUR PERSONAL RESPONSIBILITY.

At Tilney, we have been helping clients achieve their financial goals for more than 180 years. Whether you are saving for retirement, want to pass on your wealth or would like to have your investments managed by an expert, we can do the same for you.

To find out how we can help you, please call our Cambridge office on **01223 452 840** or email **neil.trickett@tilney.co.uk** for Investment Management or **laura.ingram@tilney.co.uk** for Financial Planning.

Investments carry risk –  
investors can lose money investing.  
**tilney.co.uk**



PLANNING | ADVISING | INVESTING

## *The Performing Arts in Bottisham*

I enjoyed reading Rosemary & Tony Jolley's articles on Bottisham Players in the last two month's Cressets. It brought to mind my own experiences starting in the late '60's, when as a new young teacher at the College I was privileged to be part of a vibrant performing arts scene.

The operatic group Rosemary mentioned became the Bottisham Operatic Society, which under the direction of the redoubtable George Barker mounted annual productions including performances of operas by Rossini, Mussorgsky, Schubert, Bizet and Britten (the first amateur performance of the first act of Peter Grimes). Later, the society became Bottisham Opera, a smaller group with an ambitious repertoire of smaller cast operas – Monteverdi's Orfeo, Holst Savitri, and a memorable production of Britten's The Turn of the Screw, with Bottisham's Sarah Maxwell as Miles. The group subsequently moved to Impington Village college, where they were warmly welcomed, eventually morphing into Choir 2000, a group which still gives regular performances of major works.

Still on a musical note, the College supported three adult choirs, two in Bottisham and one in Fulbourn. These groups were also part of the Inter Village College Federation, and gave annual concerts in such venues as King's Chapel and Ely Cathedral, always with a professional conductor (Sir David Willcocks, Sir Stephen Cleobury, Tim Brown and others), professional soloists and a pro/am orchestra. In the eighties a Community Choir was established for senior pupils, parents and choralist friends in the community, directed by David Bray and Martin Gent (Warden at BVC) with performances being given locally and in Jesus College Chapel. Martin also ran a series of residential Singing Weekends open to young people and adults, based on the Euro Cantat model.

For the younger generation there was a flourishing Saturday Music School, which offered choral, ensemble and instrumental coaching and tuition. One of my first theory pupils there was an eight year old Tom Poster, who now enjoys a busy professional career, often popping up on Radio Three.

The Music Society flourished under Martin Gent and others and offered performance opportunities for high quality local musicians and groups. Tom Poster returned as a young adult, and I also brought an eighteen year old Edward Dusingberre for a violin and piano recital. Ed was leading the NYO at that time, but has since become leader of the internationally acclaimed Takacs Quartet, based in Colorado. I am pleased to say that I am still in touch with both Tom and Ed. One highlight of the year was the annual visit of the Hertfordshire Chamber Orchestra, conducted by Howard Williams and Adrian Leaper, both now well known on the national orchestral scene.

The College for many years organised a series of Orchestral Workshops, when players from the area would spend a day rehearsing music from the standard orchestral canon, mostly directed by Alan Rochford from Anglia Ruskin University, and administered by the College Adult Education Department and Angela Humphreys

Many people will remember Amadeus Boldwicket's Red Hot Peppers, a trad jazz outfit, which had grown out of an ad hoc group of day school staff, which under the leadership of ace trumpeter and Deputy Head John Humphreys developed a strong local following.

*continued on page 21*

# M&P

## LANDSCAPE AND DESIGN

Patios, Block Paving, Fencing,  
Turving and all Gardening needs.

References available on request.

Local tradesman • Free estimates

**PLEASE CALL**

**01223 811144**

MOB **07837 358550**

## N & G Marsh of Burwell

Specialising in bespoke metalwork  
and engineering

- ❖ Welding services
- ❖ Handrails
- ❖ Gates
- ❖ Metal railings
- ❖ Tow Bars
- ❖ Mower repairs
- ❖ RSJs supplies

Services to Building  
and Agricultural Industries

Brian Marsh Engineer

Tel. 01638 741354 Mob. 07519 493664

Email: [Brian@n-g-marsh.co.uk](mailto:Brian@n-g-marsh.co.uk)

Website: [www.n-g-marsh.co.uk](http://www.n-g-marsh.co.uk)

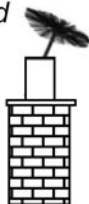
Unit 12, Meadow Ind. Estate  
Reach Rd., Burwell, CB25 0GH

## **R. BRISTLEY** Est. 1974

9 Collings. Place Newmarket CB8 0EX

## **BRUSH ELECTRIC SWEEP**

- *All Chimneys swept*
- *Solid Fuel, Oil and Gas*
- *Cowls, Nets and Pots fitted*
- *Carpets Cleaned*
- *Stoves Serviced*
- *Competitive Prices*
- *Very Clean*
- *Public Liability Insurance*



*also Classic Wedding Car Hire  
White Citroen DS21*

Tel: 01638 662439  
[www.rbristley.co.uk](http://www.rbristley.co.uk)

## **BED AND BREAKFAST**

### **THE MEADOW HOUSE**

2A High Street, Burwell,  
Cambridge. CB25 0HB



- En-suite rooms with colour TV.
  - Large car park and grounds.
  - Family rooms, children welcome.
  - English Tourist Board 4 Diamonds.
- Self catering cottage also available  
at Swaffham Prior.*

Brian & Hilary Marsh

Tel: 01638 741926 Mobile: 07519 493664

Fax: 01638 741861

Email: [Bookings@themeadowhouse.co.uk](mailto:Bookings@themeadowhouse.co.uk)

Website: [www.themeadowhouse.co.uk](http://www.themeadowhouse.co.uk)

On the dramatic front there was much activity in the late '60's. in addition to The Playmakers there was an ad hoc group of actors, led by polymath Arthur Arnold, the Adult Tutor at the College (a senior position) and Mick Lovley, the hugely talented drama teacher at the day school. They produced such plays as The Recruiting Officer (Restoration comedy), Lady Audley's Secret (Victorian melodrama), Hotel Paradiso (French Farce), Happy Haven (John Arden, performed in masks), and Le Medicin Malgre Lui (Moliere – in English). This last play was also performed al fresco in the garden of The White Swan and was followed by a demonstration of Dwyle Flunking (look it up!). Subsequently the later Adult Tutor, Joan Waters produced such classics as Macbeth, King Lear and St Joan, with notable performances by Ken George (Youth Tutor) and Ted Valentine.

Away from the College the Parish Church ran a choir, which sang weekly services, with special services at Christmas and Harvest Festival. Bottisham Handbell Ringers also performed at venues throughout the area.

Most of these activities no longer operate, but it is good to see the recent series of concerts arranged at the church by Stuart Field.

*Roger Bond*



## *Anglesey Group Mothers' Union*

Our meeting held on 15th September reflected on the recent death of HM The Queen. Patron of The Mother's Union. It was also the 90th birthday of member Enid Bucket and members sang 'Happy Birthday' to her. A vote of thanks was expressed to Jill Jenyns and Julie Sale for providing afternoon tea and venue respectively for our summer tea in August.

Guest speaker was Elizabeth (Liz) Caswell, who gave a very interesting talk about her United Reformed Church ministry. Starting with a brief history of the United Reform Churches. This was a coming together of Congregational and Presbyterian Churches on 5th October in 1972, making this their 50th anniversary year. Liz was ordained in 1973, so has always been a United Reform Minister. As a Minister, you have a number of roles e.g., chaplain in a hospital or the Services. All ministers are the same, there's no hierarchy as in other churches. Liz has been a Moderator for 11 years and was Moderator of the General Assembly presiding at Assembly meetings and other meetings and events around the UK. URC Ministers wear "what they like" and Liz didn't wear a "dog collar" until she went to Kenya.

When Liz became Moderator, her husband had a new Stole made for her. Liz had brought this Stole with her and explained that the design demonstrated her belief that we "Walk by Faith" following the Bible but also that we need symbols/items to see. Liz explained that the symbols on her Stole represented events throughout the Church's life. A manger (birth), a cross (crucifixion), an open tomb (resurrection), flames (Holy Spirit), wolf, cow, bear, lamb, all mentioned in the Bible plus a dog and rabbit. The Stole is exquisitely hand embroidered and there are companies that make (embroider) Ecclesiastical items, Stoles, Altar clothes etc. At the end of her talk Liz answered questions from the audience.

Our meetings usually take place on the third Thursday of the month, at 2.30pm in Lode Church. Hazel Williams, Ely Mothers' Union Diocesan President, will be joining us as our guest speaker on 17th November. You are most welcome to join us.

*Ann Langran*



# ANGLIA TREE CARE

**LARGE ENOUGH TO COPE • SMALL ENOUGH TO CARE**

80% OF OUR WORK IS VIA RECOMMENDATIONS  
TREE SURGERY & FELLING • HEDGE MAINTENANCE  
STUMP GRINDING • FULLY QUALIFIED  
FULLY INSURED • 24/7 SERVICE  
All work carried out to BS 3998

**Free Estimates Given within 7 days**

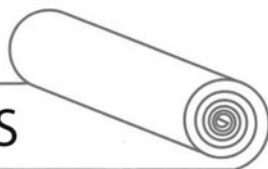


Tel. 01223 424454 • [INFO@ANGLIATREECARE.CO.UK](mailto:INFO@ANGLIATREECARE.CO.UK)

**M E M B E R**  
Guild of Master Craftsmen

## PETER FISHER

CARPETS - WOODS - VINYL



A wide range of floorings supplied and fitted.  
Please call for a free estimate and select in your home.

Tel: (Bottisham) **01223 811321**  
Mobile: **07879 494 685**

Great service for  
**30** years

November is always an interesting month at Anglesey Abbey. Preparations in the house for Christmas at Anglesey Abbey are underway and a delivery of 30+ Christmas trees is soon to arrive!

The House is closed to visitors from 1st- 30th November, but we can't wait to welcome you to Christmas at Anglesey Abbey from 1st December- 2nd January. Enjoy seasonal sparkle as you explore the richly decorated ground floor rooms in the House. In the wider estate, visit the sensory winter garden, indulge in festive shopping, and embark on a wintry adventure in the Hoe Fen woodland play area.

Entry to the House is by pre-booked timed ticket only. Pre-booked tickets are free to book and will need to be presented to the Welcome Team upon arrival. Entry is free for National Trust members, and normal admission applies to non-members.

A pop of autumn colour can still be found across the wider estate, walks along Jubilee Avenue and Coronation Avenue have a frosty feel to blow away the cobwebs. When exploring the gardens, you will be amazed by the array of statues throughout the gardens. In fact, the collection assembled by Lord Fairhaven is widely believed to be one of the finest collections of garden statuary in the country. Throughout the spring and summer, a team of volunteers clean the statues to help conserve them and keep them looking their best.

Winter Lights tickets are on sale and are quickly selling out. This year the event will be open every evening from Friday 9- Wednesday 21 December. Alongside a variety of artists and performers we'll be continuing our partnership with local author Robert MacFarlane, and illustrator Jackie Morris. The Lost Words and The Lost Spells poems, music and illustrations will thread throughout the experience. Visitors to Winter Lights 2022 will see magical projections of Jackie's nature illustrations, as well as new versions of songs and poems from the books throughout the route. Independent street food vendors nestled in the Orchard area and refuel after your night-time adventures with the many tempting treats on offer.

For more information about Christmas at Anglesey Abbey and Winter Lights 2022, visit our website and keep an eye on our social media channels.





# Hello neighbour

Bottisham's Co-op is open

**Find us here:**

12 High Street, Bottisham,  
Cambridge CB25 9DA

**Open 6.30am - 10pm, daily**



It's what we do

# Bottisham Community Sports and Social Club.



## OPENING HOURS

Weekdays - 5pm to 11pm

Saturday - 12 noon to 11pm

Sunday - 12 noon to 9pm

### HALL HIRE

Do you need a venue for a party or meeting?  
Contact the club for details of our facilities for hire.

**Come along and enjoy**  
Darts/Pool/Snooker/Billiards/Bar billiards/  
Table Tennis.  
We have two full size Snooker tables and  
two Pool tables.  
**Plus, do not forget we have BT Sport.**

## What's on

**11<sup>th</sup> November** - Race night in aid of the Poppy Appeal

**26<sup>th</sup> November** - Bowling Club Quiz Night

**3<sup>rd</sup> December** - Children's Christmas Party with 'Calamity Jane'

**4<sup>th</sup> December** - Craft Fair

**19<sup>th</sup> December** - It's the Christmas Draw and singalong with  
'Newmarket Town Band'

**24<sup>th</sup> December** - see Christmas in dancing to the sounds of  
'AJ's disco'

**31<sup>st</sup> December** - NYE party with 'Emma & The Dinosaurs'



### World Cup Matches at The Club

**Monday 21<sup>st</sup> November at 1pm**

**Friday 25<sup>th</sup> November at 7pm**

**Tuesday 29<sup>th</sup> November at 7pm**

Ad hoc bar work available, please contact  
the club for more details.

Please refer to the website. [www.bottishamsocialclub.co.uk](http://www.bottishamsocialclub.co.uk) for  
the latest information. If you wish to be kept up to date with the latest news, please  
email [bottishamcsasc@gmail.com](mailto:bottishamcsasc@gmail.com) with your email.

31 Downing Close, Bottisham, Cambridge CB25 9DD Tel. 01223 812063



**MARTIN BALL**  
FIREWOOD & TIMBER

[www.martinballfirewood.co.uk](http://www.martinballfirewood.co.uk)

[sales@martinballfirewood.co.uk](mailto:sales@martinballfirewood.co.uk)

Office • 01799 586 513  
Woodyard • 01371 830 503  
Mobile • 07980 258 003

Blunts Farm Yard  
Thaxted  
CM6 3PX



# LM

## GROUNDWORKS & LANDSCAPING

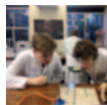
- Patios • Paving • Footings
- Drainage • Fencing & More

**Tel: 01638 743627**

**Mobile: 07934 642716**



**LANDMARK  
INTERNATIONAL  
SCHOOL**



A small international school in Fulbourn, South of Cambridge,  
**welcoming pupils aged from 4 to 16 years.**

We have experienced and enthusiastic teachers delivering a broad and engaging curriculum to small classes of pupils from Britain and beyond. We offer excellent pastoral care and are non-selective academically. Transport via school minibuses from central Cambridge and surrounding villages.

*To arrange a visit, please call:*

**Mary Greer on 01223 755100/07400 584015**

or email [mary.greer@landmarkinternationalschool.co.uk](mailto:mary.greer@landmarkinternationalschool.co.uk)

[www.landmarkinternationalschool.co.uk](http://www.landmarkinternationalschool.co.uk)

Landmark International School is a registered charity.



## *News from Bottisham Medical Practice Patients' Participation Group*

**FLU** – Please contact the Practice for flu vaccinations, the details of who is eligible is in the following link. Those not eligible under the NHS can have them done privately.

<https://www.gov.uk/government/publications/national-flu-immunisation-programme-plan/national-flu-immunisation-programme-2022-to-2023-letter>

### **WINTER - WHAT IS THE ADVICE?**

**Keep warm** – keep windows closed to keep the cold air out, eat hot meals and hot drinks.

Wearing layers keeps you warmer than one thick jumper. Get exercise but ensure warm clothing is worn when outside. Hypothermia is a real risk in cold weather.

**Help with heating costs** – look into the cold weather payment <https://www.gov.uk/cold-weather-payment>

**Vaccinations** – keep up to date on flu vaccine, COVID boosters, shingles vaccine and pneumococcal vaccination – prevention is better than cure

**Buy some “self help remedies”**– paracetamol, disinfectant cream, rehydration salts/sachets, throat sweets, Lemsip can really help to have available for when you need it.

**Getting help if you are unwell** – pharmacists and 111 can provide help and advice as well as the GP surgery

**What helps the GP?** It can be really helpful to have your own thermometer, blood pressure machine and oxygen saturation probe as if you are unwell a more rapid assessment can be provided and you can monitor your improvement or deterioration on advice from the GP.

**Look in on elderly neighbours** – do they need extra help? Call AGE UK helpline on 0800 678 1602. More info on: <https://www.nhs.uk/live-well/seasonal-health/keep-warm-keep-well/>

**Dispensary:** Reminder that for repeat prescriptions there is still a 5 working day turn around so this does not include Saturdays and Sundays, which are non-working days. Please do not try and collect sooner.

Due to Brexit, COVID-19 and issues with sourcing raw materials there have been delays beyond our control in sourcing some drugs. This changes daily and the practice cannot predict from one day to the next what drugs may be out of stock. The local Clinical Commissioning Group provide regular updates regarding stock issues and the dispensary team work closely with the GPs to source suitable alternatives to ensure patients always have their medications. These supply issues are nationwide.

There is an excellent prescription delivery service, as we run this service 5 days per week (Monday to Friday) for the delivery of repeat medication. Please enquire at the surgery if you are interested in the service.

**Social Prescriber:** Chloe has returned to duty as the Social Prescriber for the practice. She can support you to access a wide range of activities and resources in your local community. Examples of this include - benefit / housing advice, anxiety and mental health support, carer support and advice. Please see the practice website for more information. Alternatively, if

*continued on page 29*

## OvenPad Cleaning Services

I will professionally & efficiently  
clean ovens, ranges, Agas,  
ceramic hobs, extractors,  
microwaves and BBQs.

**It's a dirty job, why  
not give me a call?**

Contact **Paddy Kelly** on

Tel: 01638 742703

Mob: 07752 631343

Email: [info@ovenpad.com](mailto:info@ovenpad.com)

Website: [www.ovenpad.com](http://www.ovenpad.com)

## ANDREW EVANS

01954 780 999 – 01223 864335

email: [andrew@omegaclean.co.uk](mailto:andrew@omegaclean.co.uk)

[www.omegaclean.co.uk](http://www.omegaclean.co.uk)

- ✓ Carpet Cleaning
- ✓ Upholstery Cleaning
- ✓ Tile & Grout Cleaning
- ✓ Leather Cleaning
- ✓ Oriental Rug Cleaning
- ✓ Carpet & Fabric Protection
- ✓ Allergy Relief Treatment
- ✓ Odour Eradication
- ✓ Stain Removal
- ✓ Carpet Fitting

Family Business Since 1980



# PEST PROBLEM?

CALL DRE PEST CONTROL

01954 230708

07789 502556

- Commercial & Residential
- One - off Call Outs
- Management Contracts

Cambridge & surrounding areas  
[www.drepestcontrol.co.uk](http://www.drepestcontrol.co.uk)



*Continued from page 27*

you would like to book an appointment with Chloe then please contact reception on 01223 810030.

**Walking:** There is a Wicken Fen Wellbeing Walk on Fridays 10-11am. This is a regular, easy paced, sociable walk. They meet in the Visitor Centre at Wicken Fen on Friday morning ready for a 10am start. The walk will be around 2 miles in length at a relaxed pace, taking approximately an hour. The Anglesey Abbey Health Walks are every Thursday leaving promptly at 10.00. The assembly point is behind the garden centre, by the bike shelter. The walks are fairly brisk, and last about an hour. The distance is about 3 miles.

**The Patient Participation Group:** We are looking for new members to join the committee, all patients of this Practice are eligible. Please contact our chairman as below to find out more information and how you can be involved

**Regular Meetings:** Next meeting is Wednesday 23 November at 2pm. If you wish to join our Zoom meeting please email our chairman at [s.j.gilson@btinternet.com](mailto:s.j.gilson@btinternet.com) who will send you a meeting invite.

## *Community Library*

### **DON'T GO INTO THE LIBRARY**

The library is dangerous- Don't go in.  
If you do you know what will happen  
It's like a pet store or a bakery-  
Every single time you come out of there  
Holding something in your arms.  
Those novels with their big eyes.  
And those no-nonsense, all muscle Greyhounds and Dobermans,  
All non-fiction and business,  
Cuddly when they are young,  
But then the first page is turned.  
The doughnut scent of it all, knowledge,  
The aroma of coffee being made  
In all those books, something for everyone,  
The deli offerings of civilization itself.  
The library is the book of books,  
It's concrete and wood and glass covers  
Keeping within them the very big, very long story of everything.  
The library is dangerous, full of answers. If you go inside,  
You may not come out the same person who went in.  
'Alberto Rios, state poet laureate of Arizona'

**YOU HAVE BEEN WARNED but we are open on  
TUES 3.00-5.00pm and 6.00-8.00pm, WED 10.00-11.30am  
THURS 3.00-5.00pm. FRI 6.00-8.00pm. SAT 10.00 – 12.00**

*Sylvia Overton*

# The Bell Bottisham

Your local 16<sup>th</sup> Century Pub, offering a good range of Alles, Ciders and Lager  
Bar Snacks, light bites served Wednesday to Friday, lunchtimes and evenings

Sunday lunch from 12.00 to 2.00pm

Bingo every Wednesday evening

Small dining room / meeting room seating 12 - 14 people.

**Please call the team on 01223 811483**

**Our opening times are;**

#### Lunchtimes

Wednesday to Friday 12am - 2pm

Sunday 12am - 3pm

#### Evenings

Monday to Friday and Sunday 5pm - Close

Saturday 4pm - Close

## TV AERIALS

## SATELLITE

## DIGITAL FREEVIEW

**Installations**

**Extra points etc.**

**Tuning in of TVs, Digiboxes etc.**

**Experienced local engineer**

**RICHARD FORTEY**

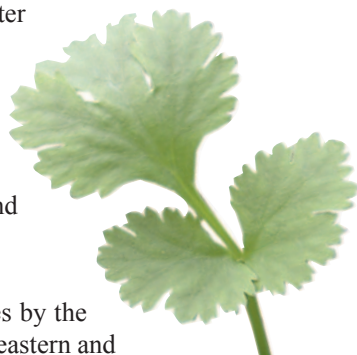
**01638 662119**

**No Call Out Charge**

## Community Herb Bed News

October has been a quiet month, as we have needed to water much less often. However, we will continue to dead head the pansies and weed the beds, keeping them tidy for the community to enjoy.

Please contact us via [brownsjc46@gmail.com](mailto:brownsjc46@gmail.com) if you would like to make suggestions etc. Any favourite herb recipes that you would like to see included, please send them to me. Thank you, Sarah Brown.



### **‘HERB OF THE MONTH’ - CORIANDER**

Coriander may have been introduced to the British Isles by the Romans. It is a widely used culinary herb, used in middle eastern and Asian cuisine and is also widely used in North and South America.

The coriander plant produces a herb from its leaves and also a spice from its seed.

### **GROWING**

I have tried numerous times to grow Coriander from seed, with mixed success. It is quick to bolt, but if left to flower, you can harvest and store the seeds for using in spicy dishes.

Try sowing Coriander seed in light well-drained soil in April-May, thinning the young plants to approx. 8in apart. To collect the seed, watch carefully as they fall with no warning as they ripen.

You can also cut the whole flower stem and leave the seeds to ripen and dry on clean paper towel, in a warm place, then store the seeds in an airtight container. Coriander is a relative of Parsley. The leaves have a tangy taste, which most people enjoy, however some people complain that it tastes like soap!

## **RECIPE FOR CARROT AND CORIANDER SOUP**

### **Ingredients**

1tablespoon olive oil / 1 onion / 1teaspoon ground coriander / 200g floury potatoes / 450g carrots  
1.2 litres vegetable stock / A large handful of fresh coriander

### **Directions**

Chop the onions, then fry them in the olive oil gently for 5 mins until softened, in a large pan.

Peel and chop the potato and add to the onions with the ground coriander. Stir for 1 min.

Peel and chop the carrots, adding them with the stock to the pan.

Bring to the boil, cover and simmer for 20 mins.

Pour the soup into a blender, then blend it until it is smooth. You may need to do this in batches.

Taste and add seasoning if required.

**Enjoy!**

# **EAS** **UK** **Asbestos**

EAS UK Asbestos are experts in asbestos removal and are fully committed to meeting the safety needs of our clients and as a result we receive a very high percentage of our contracts simply through personal recommendation and repeat business. Working within the asbestos industry since 1990, EAS UK Asbestos work on Asbestos Removal projects, producing comprehensive survey reports and removing asbestos from homes and workplaces.

We have the experience and expertise in asbestos surveying and Asbestos removal to ensure that your home or business is a safe environment, free from asbestos exposure and contamination. Our job is to return your home or establishment to a clean and safe environment.

5% discount if you live in Bottisham and if we do a second job at the same address, we will give you a discount of 7.5%. just say Bottisham by email or phone. Excludes sample testing.

[www.easukasbestos.co.uk](http://www.easukasbestos.co.uk)

email: [office@easukasbestos.co.uk](mailto:office@easukasbestos.co.uk), Tel: 01223 902150 Newmarket office: 01638283871

SUMMIT



## **LANDSCAPES**

**PAVING - DRIVEWAYS - BRICKWORK**  
**CARPENTRY - GROUNDWORKS**



[www.landscapingpaving.co.uk](http://www.landscapingpaving.co.uk)

**PHONE: 01223-929394**



## *Public Transport Matters*

Public transport is very much in the news at the moment due to Stagecoach proposing to cut 18 bus routes including the 11 and 12. These routes are essential for children to get to school and people generally able to get to work, the shops, the doctors, the hospital or just to have a happy visit somewhere to family, cafés, etc.

The Greater Cambridgeshire partnership and local councils are getting together to try to find a solution and the finance needed. Charlotte Cane updated me yesterday on the plans. Tenders have been put out and companies have until October 19th to apply. Stephenson's have already suggested they could run the 12.

I wrote to them suggesting that they slightly change the route by going via Quy and turn right at the Anglesey Abbey and Lode junction. Bottisham residents have long expressed a wish that the 12 stop could be easier to reach. They suggested Bell Rd. but there are problems with congestion by the Coop.

Apparently, there are often hold ups as you travel through Quy. There is a suggestion that the local buses could be franchised like Transport for London. There could be money coming from the Greater Cambridgeshire partnership and the Cambridge county council.

Charlotte told me the dates had been set for the meetings. An article in the Newmarket Journal did say that while the Conservatives had voted that a sum of money could be added to that offered by the Mayor in the Greater Cambridgeshire partnership the Labour, Lib Dems and Independents had voted against it. I have now been assured that it was because they did not know how much money was being suggested. Let's hope things can be sorted so that we can continue to have the 11 going through the villages and linking us to Cambridge, Newmarket, Bury and Ely.

Lucy Frazer in her email yesterday said that she had met the Managing director of Stagecoach East and conveyed her anger and concern and asked him to reconsider. She points out that it is a devolved matter and has to be sorted out by the Mayor and the combined authority. As our MP she hopes to meet the Mayor.

She points out that the Government has made a significant amount of money available to protect bus services until the end of March. Our local Parish councils are on the case and there are many petitions.

### **We need the buses!**

There are problems with strikes by railway workers which have also affected people going about their daily lives or on holiday. The Transport Secretary Anne-Marie Trevelyan says a deal can be done but will require compromise.

On a more cheerful note places are being suggested for holidays by Eurostar from London so you don't have to fly - St Moritz for the Bernina Express, the Rhine from Mainz, take a train to Chur for the Swiss Alps and then on to St Moritz.

**Happy travelling. Take care. Rail info - 08457 48 49 50**

*Paddy James*



**Copy deadline for next issue is 14 November.**

*Please send material to the editor at [BottishamCresset@gmail.com](mailto:BottishamCresset@gmail.com)*

## Exciting changes to our care home

At Hilton Park Care Home, we believe every person should be treated as an individual, with tailored care provided in the very best surroundings. That's why our home's recent refurbishment has been designed with comfort, well-being and happiness in mind.

**We hope you'll love the changes as much as we do.**



Stylish new café, stocked with delicious home-made treats  
—the perfect place to meet family and friends.

Well-appointed hair salon for regular pamper sessions.

Restaurant-style dining rooms serving residents' favourite dishes.

Luxury spa bathroom for soothing soaks and relaxing experiences.

Choice of beautifully decorated lounges to feel comfortable in.

**Call 01223633900 to arrange a visit.  
We'd love to show you around.**

Hilton Park Care Home, Bottisham, Cambridge, CB25 9BX

[www.barchester.com/hiltonpark](http://www.barchester.com/hiltonpark)

## *News from Wicken Fen Nature Reserve*

### **WINTER AT THE FEN**

The crisp, winter mornings are a real pleasure to experience at the Fen – you can always warm up in the Docky Hut Café with a hot drink and a delicious snack or treat afterwards. Look out for the return of hen harriers and short-eared owls to the reserve. Hen harriers can often be seen towards dusk, gliding over Sedge Fen looking for a safe place to roost. Burwell Fen is a good place to go to see short-eared owls – again, late afternoon is a good time to see them when they hunt for small mammals. Our friendly Visitor Centre team can advise you on the most recent sightings.

### **FAMILY FUN**

Our winter woodland trail starts on Saturday 26 November; seasonal fun for all the family on Sedge Fen, normal admission applies. You can drop in anytime, no need to book.

Our Father and Mother Christmas at the Fen event is proving popular – book soon to catch those last remaining tickets. Details can be found on our website.

### **FOOTPRINTS: COMMUNITY ENGAGEMENT PROJECT**

#### **NEW WICKEN WELLBEING WALK – FRIDAYS 10-11AM**

We've recently launched a weekly wellbeing walk at Wicken Fen. It's an easy paced, sociable walk of around 2- 2.5 miles. If you'd like to join us, please meet in the Visitor Centre at Wicken Fen on Friday morning ready for a 10am start. See our website 'What's On' section for further details.

### **FENS EAST PEAT PARTNERSHIP (FEPP)**

Wicken Fen is one of the FEPP partner organisations. FEPP has been awarded a Nature for Climate Discovery Grant enabling us to carry out detailed surveys on the extent of peat degradation, peat depth and archaeology on 20 sites across Cambridgeshire.

We have recently started to survey peat depth on Verrall's Fen and will be working across several of the key areas for peat on the reserve. The surveys will help us create plans to restore damaged peat. You can find out more about the project and why peat restoration is so important at Fens East Peat Discovery Project | Lincolnshire Wildlife Trust ([lincstrust.org.uk](http://lincstrust.org.uk))

For the latest reserve information, please visit our website  
[www.nationaltrust.org.uk/wicken-fen](http://www.nationaltrust.org.uk/wicken-fen)

## **COMPANION AND HOME HELP REQUIRED**

Companion and home help required at the weekend  
for 2 hours on a Saturday and Sunday lunch time.

We are looking for someone to visit an elderly lady in the village. Duties would include heating a prepared lunch and making a sandwich or salad for later and having a general chat.

**Please contact me on the following email address: [zen223838@zen.co.uk](mailto:zen223838@zen.co.uk)**



## Are You Paying Too Much For Your Medical Insurance?

### Independent And FREE Advice

- **Switch to an alternative scheme** – If you are currently insured, switching to a competitor can mean ***substantially lower rates***
- **Pre-existing conditions covered** – It is often possible to include pre-existing medical conditions currently covered by your existing provider
- **Improve your coverage** – We can frequently improve your cover whilst also lowering the cost of your premium
- **Complexities of different schemes** – In many cases, people are over insured – we can ensure you are covered with a scheme that meets your individual needs and requirements
- **Full cover for cancer treatment** – Many policies do not cover cancer in full – we are able to advise on your current level of coverage



For further information, please call Simon Lively at  
M&L Healthcare Solutions -

**FREEPHONE 0800 145 5838 or 07710 993990**

Email: [simon.lively@mlhs.co.uk](mailto:simon.lively@mlhs.co.uk)

quoting ref: The Cresset

M&L Healthcare Solutions Ltd is authorised and regulated by the Financial Conduct Authority. (FCA Reference number 943748)

## *Reasons to be Cheerful...*

### **And earth shattering questions that need answers.**

Why is half mast meant to be two thirds?

Can you eat a burger without looking inside first?

Can you eat a doughnut without licking your lips?

There is a fish and chip shop up north called “Frying Nemo”. (Steve Bennet)

Pulled out a nose hair today to see if it hurt. Judging by the reaction of the man asleep next to me on the bus, it seems pretty painful! (Facebook).

Did you know that Cardiff sixth form college has a campus in Cambridge?

The Honest burgers restaurant in Cambridge is in the same building as the former pub called The Red Cow. Medium rare or well done?

A Logophile is a person who loves words. In others words a “word nerd”. I thought it was where you kept your firewood!

Does anybody know Nanny McPhees first name?

There is a factory in Grimsby that produces 80000 Cod fish fingers every day. (Inside the factory).

Did you know that the Laurel and Hardy theme tune is called “The dance of the cuckoo’s “?

Word of the month: Flub.

To err is human. To arr is pirate.

You can’t take anybody seriously when they have hiccups.

They say that “you can’t have your cake and eat it”. I beg to differ.

Guy Fawkes had the right idea.

The 3rd of November is World Jellyfish day. It’s not even a fish!

*Keep smiling - Peter Rayment*

**Have you ever stopped of a morning to sit down to have a cup of coffee in the house on your own, and thought it would be nice to talk to somebody?**

**Well you can and very easily too. Come along to Meeting point on a Wednesday and have that cup of coffee with like-minded company**



### **in the Poppy Room at the Bottisham Community Sports and Social Club**

A place where you can meet old friends  
make new friends, relax, chat and enjoy  
coffee, cake and biscuits in a friendly  
relaxed atmosphere.

**EVERYONE WELCOME**

**ADMISSION FREE**

# D.S. FREEMAN

## Painters & Decorators

- Residential & Commercial
- Interior & External
- Fully Insured
- All Aspects Undertaken

duncan@dsfreeman.co.uk

**Tel: 01223 812920**

Longmeadow

## Morgans Hairdressers

Tel: 01223 811646

### Creative styling for the family

- Creative cutting
- Hair up
- Colouring
- Colour correction
- Perming

Open: Tuesday - Saturday, Wednesday  
until: 8.00pm



10 Herschel Court, High Street,  
Bottisham, CB25 9DQ



Follow us on facebook

## E.J. DENSTON

### KITCHENS & CARPENTRY

All aspects of Carpentry & Joinery  
New Build 1st & 2nd fix carpentry  
Purpose made cupboards, wardrobes  
& Bookcases  
Kitchens supplied & fitted  
Renovations & small build works



**Tel: 01223 813279**  
**Mobile 07711 578687**

## Carpentry Services

### TONY MARTIN

Over 30 years experience

***Any carpentry jobs  
undertaken — BIG or small***

Call Tony  
for a free estimate  
**Tel: 01223 812786**  
**(Bottisham)**  
**Mobile: 07767475987**



## ***Bottisham Bowling Club***

The season has been challenging but enjoyable. Some matches went brilliantly, some were fine, but others were a disaster! Our A team finished middle of their League, the B team finished one higher than last year but still close to the bottom, but unfortunately our County Triples team propped up the rest of their League. However, win or lose we all had a most enjoyable time.

Terry Webb and George Buchanan, helped by the 'Green Team', who are overall responsible for our green, did a remarkable job, in spite of the heat and lack of rain and the grass held up remarkably well. It was fortunate that on the day that 40 degrees centigrade was predicted (and happened) our matches were postponed – it was difficult enough sitting in the shade let alone playing in the sun. Hidden from sight most of the time were Julie Bard and her team who must be thanked for keeping the clubroom spotless throughout the season.

The 'Big Bowls Event' on 28th May was a success in that 14 new people attended and gave their details as being interested in joining our club. We hosted a highly successful Ladies County Match in August, when a large crowd saw a keenly fought match witnessing Cambridgeshire win by a whisker in glorious weather.

We are looking forward to our Club Dinner on 12th November at the Newmarket Golf Club when our trophy winners for the season will be presented with their cups:

Men's singles: Simon Missing, Ladies Singles: Julia Green, Men's Pairs: Kevin Crisp & Ben Lawrence, Ladies Pairs: Julia Green & Cindy King after a very close game against Nora Watson & Jenny Gibson, Mixed Pairs: Julia Green & Graham Watson. Julia Green deserves particular congratulations for winning all three of the knockout competitions she entered.

We have our popular Quiz Night on 26th November 7-11pm in the Sports and Social Club. Teams of six – names to Hilda Buchanan Tel 01223 811689 or message our secretary Peter Clowes on 07756 431234 or email [bottishambowlingclub@gmail.com](mailto:bottishambowlingclub@gmail.com) Bottles of wine for the winners!

Our new website continues to be hugely successful with over 2700 visits since the site went live back in January. Most popular hits are the home page, club match results and the internal single and doubles knockout match results. Many thanks to Tony Kohlman for making the website such a success. All information about the club continues to be available so why not visit the website: [www.bottishambowlingclub.co.uk](http://www.bottishambowlingclub.co.uk) to get more information. Why not give bowling a try next season? The green will open mid April 2023 – 'roll ups' start on a Tuesday afternoon.

*Stuart Field*

---

**Copy deadline for next issue is 14 November.**

*Please send material to the editor  
at [BottishamCresset@gmail.com](mailto:BottishamCresset@gmail.com)*

## **S. NEAL** *Carpentry and Small Works*

Offering a high quality carpentry and small works service in Bottisham and the surrounding area.

FLOORING • HANGING NEW DOORS  
KITCHEN RENOVATIONS • DECORATING •  
TILING • LANDSCAPING  
BESPOKE CARPENTRY



**07703 043243**

SNealCarpentry@Gmail.com  
@S.Nealcarpentry



## My love for dogs An alternative to Kennels

A personal, caring approach to dog care.

In our home, your dog will receive two hour-long walks every day as well as treats, socialisation with other dogs and the administration of any required treatments.

- Fully insured and police checked
- Licensed by Sth. Cambs. District Council.

For further details call Amanda on  
07903 806750

Based In Steeple Morden near Royston.



**ONG**

“Successful entrepreneurs are givers and not takers of positive energy.” ANONYMOUS



**codge.com**  
**info@codge.com**  
**01449 675 548**

Design & Origination • Website Design & Maintenance • Email Marketing • Digital Publishing  
• Logo Creation • Cartoons & Illustrations • Theatrical, Product Photography & Retouching •  
Business Stationery • Promotional Flyers & Posters • Newsletters & Magazines • Programs &  
Catalogues • Books & Brochures • Calendars • Reports • Signage, Displays & Banners •  
Personal & Wedding Stationery • Mac Training

# ***Bottisham and District Gardening Club***

## **TUESDAY 27 SEPTEMBER 2022**

Our speaker this month was Nigel Start and the subject of his talk was Coping with Climate Change. We have all suffered from the very hot summer this year, but Nigel has been giving this talk for 15 years now so has been aware for some time that we will have to adapt the way we garden. There are things we can be doing to cope with the greater extremes of weather.

Weather extremes mean hotter summers with less rain – we had no rain here from July until a very welcome storm in mid-September. So we must cope with water shortages, organising rainfall collection throughout the year in water butts, protecting the soil with a mulch, and porous drives such as block paving and gravel will allow rainfall to soak through.

Plant perennials rather than annuals and don't plant too close together. Plant little and often, preferably using RHS Award of Garden Merit plants which have a seal of approval following trials that show they will perform reliably in the garden. Nigel recommends hardy geraniums (which also do well in shade), lavender, salvias, Perovskia (Russian sage), erigeron (Mexican fleabane), ferns, wallflowers. Silver leaf plants and hairy plants do well. Roses have also done well this year and what a crop of apples we have had.

We have all looked at our lawns turning yellow and parched but they should come back to life after a decent spell of rain. Vulnerable plants include hostas, pulmonaria, summer bedding, and anything dwarf – all will need regular watering. The Q and A advice was to get as much rotted compost as possible in your soil NOW, try not to dig too much, and compost from councils is OK. All good advice which I for one will be following.

## **FORTHCOMING - TUESDAY 22 NOVEMBER, 7.30 IN THE POPPY ROOM, BCSSC**

Our topic for our next meeting is The History of Anglesey Abbey with speaker Helen Ackroyd. Our annual subscription remains at £15 per person and we are in the process of preparing another interesting programme for next year.

New members are always welcome.

*Tricia McLaughlin*

## ***Letter***

Dear Editor,

My name is Élise Lapaire and I am the new Adult Learning Manager at Bottisham Village College.

Our aim at the Bottisham Village College Adult Learning Centre is to provide a varied program of both daytime and evening courses. Whether you wish to learn new skills, expand your knowledge or just meet new friends it would be great to see you here.

We are also aware that our community is filled with talents and skills and at the Adult Learning Centre we are very keen to ensure every individual benefits from them. Should you wish to discuss becoming a tutor, we would be very pleased to hear from you.

Please do look at our website for further course information or call us on 01223 811372 to find more about our Italian Cooking, Yoga and Calligraphy classes, to name but a few.

Looking forward to hearing from you soon,

*Élise*

## Tutor



Experienced tutor:

Fully qualified former primary school teacher and home educator based in Little Wilbraham

Expertise in:

Primary

Key Stage 3: Maths, English,

History & Geography

Study skills & revision techniques

For information and to arrange a free meeting/consultation contact:

Anne-Marie McCubbin BA(Hons) PGCE  
email: [info@wingstoflyeducation.co.uk](mailto:info@wingstoflyeducation.co.uk)  
tel: 01223 811939

## SHANE MAUREL HANDYMAN SERVICES

ALL TYPES OF DOMESTIC WORK  
UNDERTAKEN

From:

Plumbing,  
Carpentry  
Gardening  
Electrical  
Tiling

to

Moving Furniture

I WILL DO THE  
LOT!



Tel: 07518 644537

Email: [shapiemau@gmail.com](mailto:shapiemau@gmail.com)

## STEPWISE FOOTCARE

**Vivien Honeyborne-Martins**

MA(Cantab) BSc(Hons) MChS HPC Registered



**Clinic-based Chiropody/Podiatry**

- *Chiropody*
- *Biomechanical assessment*
- *Insoles/SIDAS bespoke orthotic therapy*
- *Children's foot problems*
- *MotionMetrix gait analysis*
- *Lunula Laser™ fungal nail treatment*
- *Swift Microwave for verrucas*

***The Burwellness Centre***

10 Ness Road, Burwell, Cambridge, CB25 0AA

Tel: 01638 741973 [stepwise-footcare.co.uk](http://stepwise-footcare.co.uk)



**PHOENIX TILING SERVICES**

- Professional tile fitting for homes and businesses
- All types of wall and floor tiles fitted
- Local, friendly and reliable service using the latest precision tools
  - Trained by the STC Group

Contact Ray for a quote on  
07591 747625 or

[phoenixtilingservices@gmail.com](mailto:phoenixtilingservices@gmail.com)

[www.phoenixtilingservices.co.uk](http://www.phoenixtilingservices.co.uk)

## *Thoughts of a Sports Nut*

In late September, the Home Office announced that what was euphemistically called ‘disorder’ at football matches was now at an eight-year high. Pitch invasions were high on the list of misdemeanours and authorities are terrified that, sooner or later, a professional player is going to be seriously hurt. Last season, astonishingly, there were incidents reported from more than half of all matches in the top four divisions and 70% of those arrested were aged between 18 and 30.

Then in early October, The FA announced yet another increase in attacks on match officials in grassroots football. Forever an easy target, referees up and down the country are subject to all sorts of aggression from players, managers and spectators, ranging from spitting to death threats! There were 380 individuals banned for attacks on refs last year but it seems to make little difference. Scottish referees tried going on strike a couple of seasons ago and, recently, the Merseyside Youth League cancelled all matches for a weekend to draw attention to the problem. Sadly, these actions are merely drops in the ocean.

Readers may know that I have been involved in football governance for a few years now, currently working for an independent consultancy looking into misconduct at amateur level. Right now, I have 18 cases on my desk, of which 10 are from youth football (age 9 to 18). Nine cases are of abuse or threats to match officials, five involve spectators in youth football and I have four cases of racial abuse. Believe it or not, two of these games were friendlies!

What do the previous three paragraphs tell you, folks? I draw three main conclusions from this horrible picture. Firstly, that we have a serious cultural problem in the UK that is not confined to sports and this requires urgent government intervention (e.g. addressing the divide between haves and have-nots; bolstering law-enforcement services; getting a grip of the drug-taking epidemic; I could go on...). Secondly, the example set by professionals whose matches are televised is appalling, as is the tolerance of referees who constantly allow themselves to be surrounded and berated by snarling participants; no wonder the mums and dads on the Sunday morning touchlines, living the dream vicariously through their children, think the referee is ‘ruining the game’! And thirdly, that punishments for offenders are way short of the mark. How about a life ban for touching a referee? Or deducting league points from teams whose players misbehave? Or even kicking teams out who can’t control their spectators?

Draconian punishments would certainly help but, surely, it’s time for some joined-up thinking between the stakeholders! I say to the FA: ditch the obsession with numbers and concentrate on quality! And, for goodness’ sake, beef-up the training and development of referees so that they are better equipped and supported to deal with difficult situations! Oh, and get rid of VAR... wasn’t it the ‘magic bullet’ that was supposed to stop all arguments...? Yeah, right!

Whilst I’ve been despairing over the state of football, I continue to be enthralled by the world of cycling (and not just because my own exploits on two wheels with the CB25ers involve coffee, cake and beer)! The post-Grand Tour season has brought some truly stunning performances from some of the planet’s outstanding athletes. You may remember I mentioned Annemiek van Vleuten’s victory in the Tour de France Femme, a couple of months ago,

*(Sports Nut continued on page 45)*

# SECURE CONTAINER STORAGE

**10ft and 20ft**

IDEAL FOR BUSINESS OR PRIVATE STORAGE.  
CONVENIENTLY LOCATED IN BOTTISHAM

**Call 07841 930065**



**Rothwell's**  
Carpet Cleaning

**01638 428 060**

**01223 832 928**

**[www.Rothwells.biz](http://www.Rothwells.biz)**

## **Carpet Cleaning**

### **Stone Floor, Upholstery & Rug Cleaning.**

*A few points that make us stand out from the others,*

Rothwell's has been in business since 1993.

We're an honest local family firm.

Our large truck mounted machines mean more cleaning  
& drying power for the best results possible.

Members of both the NCCA and TACCA.

We will move the furniture for a thorough clean.

100% satisfaction or it's FREE.

*Call Oliver and Max Campbell for expert help today.*

Rothwell's, Malting End, Kirtling, Newmarket, CB8 9HH



*(Sports Nut continued.)*

wondering if, at 39, this was her final swan-song before retirement. Er, no! Competing in the World Championship Team Time Trial in September, she crashed and fractured her elbow. Three days later, in the Road Race, she gritted her teeth against the pain to attack the race leaders 500 metres from the end of the 164-kilometre course, to crown her year with yet another rainbow World Championship jersey. Superwoman!

Perhaps there's a Superman in the making 'next door' to van Vleuten? Belgian rider Remco Evanepeol, fresh from his dominance of La Vuelta, stormed to victory in the Men's Road Race, thus – at the age of 22 – putting down his marker as a contender for all Grand Tours and Classics for years to come. And then, of course, there's an Italian with a genuine claim to the 'Superman' monicker. With two World Championship Time-Trial wins and six Grand Tour Stage wins under his belt, Filippo Ganna had a crack at the ultimate cycling challenge on 8th October – the UCI Hour Record – at the Tissot Velodrome in Grenchen, Switzerland. At 6ft 4in and nearly 13 stone, Ganna is a giant among elite cyclists in more ways than one! He smashed the record previously held by Daniel Bigham by over a kilometre, to set a new record of 56.792 km! That's over 35mph, people! He joins a pantheon of 'greats' who have previously taken on The Hour, including Chris Boardman, Jens Voight and Sir Bradley Wiggins, and one wonders if Ganna's effort will stand undefeated for decades! Superman... at least for now!

On the topic of superheroes, I see that Ben Stokes returned to the England T20 team in October in time to enjoy the second pre-tournament defeat of Australia in a warm up mini-series before the forthcoming World Cup. But such is the strength in depth of this England outfit – led with considerable style by Moeen Ali – it's by no means certain that Stokes will make the first choice XI. "We're dangerous" says Moeen, with a justified twinkle in his eye, having completed a 7-match series win in Pakistan during September.

But let's not get carried away with the fireworks of this format... we have the serious matter of an Ashes series in June and July next year and, in the meantime, we hope to find out whether the proposals offered by Andrew Strauss on behalf of the ECB are likely to be adopted across English and Welsh cricket. The aim is to redress the balance between the red ball and white ball games, whilst at the same time, easing the physical demands on players and, most importantly, producing the best Test team in the world! A tall order, I suggest, and it is out of the question that everyone will be satisfied with the final decisions. The proposals would cut the number of top division County Championship games and the number of T20 Blast games to 10 each per season, to make room for the One-Day Cup and The Hundred. But personally, I don't know why they don't just forget the Men's Hundred instead! Could it be the cash, do you think? I am a great admirer of Strauss but I must say I share the opinion of John Stephenson, current Chair of Essex CCC, that "reducing the amount of red-ball cricket is not the way to produce better Test cricketers". Time will tell...

*TTFN*

*Gerry Daish*

*"When money comes in at the gate, sport flies out at the window." -  
Theodore Roosevelt*



# DRAIN-PLUMB

*Plumbing, Heating & Drain  
Services*

## BLOCKED DRAINS CLEARED

- Gas Boiler Service & Maintenance
- Power Flushing of Boilers & Heating Systems
- Home Buyers CCTV Drain & Plumbing Surveys
- All Plumbing & Heating Repairs/Alterations
- All work Guaranteed

TEL: 01638 742873  
MOB: 07932 773515

7 NESS ROAD,  
BURWELL  
CAMBRIDGE, CB25 0AA



## Need a little extra Financial Help?

We don't have a magic money tree, but we may be able to help!

### BOTTISHAM LOCAL CHARITIES

\*Bottisham Local Charities can offer support to people with a minimum of two years residence in the village

\*If you receive additional state benefits for pensions, housing or disability you may be eligible for help with household bills

\*If you are starting a course of Higher Education you can apply for help with buying text books

\*If you are starting an Apprenticeship you can apply for help with buying tools and equipment

For further information or an application form contact the Clerk:

bottishamlocalcharities@gmail.com  
01223 813774 or 0792 042 5154

### **“What we need is a dose of realism!”**

Due to a recurring back problem I was recently confined to a few evenings of TV during which I rapidly began to realise that what we desperately need in this country is a dose of realism. Realism about the society we share and a realism which recognises that some sections of society are much smaller than many may think.

Judging by TV broadcast material alone you might understandably assume that almost every middle-class family in Britain is interracial and that somewhere in the plot you will find a gay relationship. Collectively however, ethnicity, sexuality and gender diversity equate for just ten per cent of the population yet, on the particular evenings I watched TV, I would say that this representation was significantly and consistently exaggerated. Why is it I wonder that TV and Radio Programming; Drama, Adverts, Documentaries, News Coverage and Continuity Announcers for example, increasingly fail to reflect the mainstream audience?

Throughout our late Majesty's reign, her recent jubilee and during the days leading up to and including her funeral we heard endless admiration from commentators and historians of the constancy, stability, social cohesion and moral guidance she brought to those she served. A moral guidance I might add that appears hard to find in some homes or in schools if local newsfeeds are to be believed, and even on TV! The values the Queen embodied are also the precious lifeblood of any democratic society. Yet there is daily journalistic comment concerning these values and how they are being furtively undermined by a very loud unrepresentative offshoot of society. Moreover, fashionable dogmas are being given undue recognition by a plethora of organisations and establishments who all seem to have been brainwashed into adopting the same mantra – that minorities are ‘cool’ and must be ‘celebrated’ and not questioned’.

To the majority of tolerant people in this country it does not matter one iota the diversity of skin colour, of accent, of gender or of sexuality. But should these characteristics ever come into play what IS critical is the reasoning behind it. No one has a mandate to revolutionise the way in which various components of society work harmoniously together – often referred to as the ‘social order of things’. The cynical would suggest that the call for more diversity and inclusion is a ruse to justify politically led alliances such as BLM, Stonewall, Mermaids et al. Supporters of these alliances use ‘virtue signalling’ to display their ‘wokeist’ empathy toward those who are said to have suffered or suffer social injustices. To be clear ‘virtue signalling’ is defined as; “publicly expressing or displaying opinions or sentiments intended to demonstrate one's moral correctness on a particular issue”. The English FA did this when ‘taking the knee’ and the English Cricket Board signalled their ‘moral correctness’ recently when flying the ‘Gay Pride’ flag next to the Union Flag at a recent test match...



# CHAPEL DENTAL

84 Angle End  
Gt. Wilbraham  
CB21 5JG  
Tel: 01223 881611

## **Claire Jackman BDS & Associates**

NHS, DENPLAN & PRIVATE TREATMENTS  
With special interests in implants and orthodontics  
Monday to Friday 9.00am-5.00pm  
Saturday 9.30am-1.30pm (*Saturday Private Patients*)

[www.chapel.dental](http://www.chapel.dental)

---

**NEW PRIVATE AND DENPLAN PATIENTS ALWAYS WELCOME**

## **Chiropody** **In your own home**

**Save £5**  
off your first treatment  
when you present this advert.

Call **07905 267114** for an appointment

**Daniel Harris BSc Hons MChS**  
**Fully qualified and Registered with Health Care Professions Council**

Some columnists, including Geraldine Scott in *The Times*, liken the act of virtue signalling to social engineering – something on which no one has been consulted and to which no one has given consent. The journalist Toby Young comments; “Institutions tasked with preserving our heritage and culture, such as Tate Britain, Kew Gardens and the National Trust, are busy holding themselves to account for their alleged links to slavery and colonialism, while the police, the civil service, the NHS and the Church of England and yes, Broadcasters have embraced the mantra of diversity and inclusion. Incidentally I read that the NHS employs over two hundred ‘Diversity and Inclusion Managers’ at a salary in excess of £77,000 each – how many nurses is that!!

The people in charge of these organisations do not think of these values as politically contentious, while those of us who do not fall into these categories – probably the majority – cannot help but feel alienated and disenfranchised. The feelings of moral duty are now not directed towards crown and country but to the cause of social justice”. Douglas Murray in *The Spectator* is also of the belief that this is having a demoralising effect on the portion of the British population who are still the majority. He comments; “One of the problems with the ‘more-diversity-the-better’ chant is that it makes the majority feel like they are not just a problem but THE problem”.

This surreptitious attempt at social engineering by racial and gender alliances is heightened by their demands for all types of organisations and advisory bodies to introduce diversity and inclusion training programmes. If they do not, their businesses risk being targeted and censured. The BBC has been warned by one of its own – Roger Bolton – that it risks a revolt from its majority audience if it continues to chase diverse audiences. Like other broadcasters it is overly focussed on diversity and inclusion and in so doing is in danger of neglecting and offending its existing audiences. Why change a winning formula such as ‘A Question of Sport’ where audience figures have since plummeted from over 5m to less than 0.8m??

If institutions continue to kowtow to illusory alliances there can only be two possible outcomes. One is that you demotivate most of the people, and therefore most of the talent. The other is that you store up a festering resentment and the message is lost. Whilst such factions must have rights and freedoms, this entitlement must not include the right to impose their dogmas on society’s majority – impositions on which no one has been consulted and to which no one has given consent.

Diversity in the main is a good thing but for it to work it must reflect a realism that some sections of society are much smaller than many may think.

*JOW*

**“Social diversity is not a matter of intensity but of balance, order, rhythm and harmony”. Anon**

**Copy deadline for the next issue is 14 November.**

*Please send material to the editor at [BottishamCresset@gmail.com](mailto:BottishamCresset@gmail.com)*





# ARCHITECTURAL DRAWINGS

FOR

PLANNING & BUILDING REGULATION APPLICATIONS

NEW PROPERTIES, EXTENSIONS, LOFT CONVERSIONS ETC

CONTACT US now to arrange a FREE on-site meeting at your convenience to discuss your project.

## ELY DESIGN GROUP

*'Architecture by Professionals'*

[www.elydesigngroup.co.uk](http://www.elydesigngroup.co.uk)

01353 649649

[mail@elydesigngroup.co.uk](mailto:mail@elydesigngroup.co.uk)

# Lloyds Gardens

**Friendly Affordable Reliable Gardening Service**

- All aspects of tree surgery
- Stump grinding
- Root ball removal
- Tree houses
- Garden Structures
- Bespoke clay pizza ovens

FULLY ACCREDITED AND INSURED

ALL WORK CARRIED OUT TO BS 3998 STANDARD

MANY HAPPY REFERENCES AVAILABLE ON REQUEST

Tel: 01638 744140

Mob: 07811 132709

[WWW.LLOYDSGARDENS.ME.UK](http://WWW.LLOYDSGARDENS.ME.UK)



In the July/August article, I mentioned that an important part of the 'lifesaving process' is often early application of CPR – cardiopulmonary resuscitation. EAAA is committed to continual training of crews, supporters and members of the public in this process. Whilst many, particularly members of the emergency services, will be familiar with this, others will be much less so, or have no knowledge of it at all.

*Please take a few moments to acquaint yourself with the Casualty Assessment Procedure, namely:-*

**Danger** – firstly ensure your own safety – be aware of any danger to yourself, the patient and any bystanders

**Response** – check the patient for response – shake their shoulders and ask “are you alright?”

**Airway** – open the airway and ensure it is clear. Place your hand on their forehead and, with other fingers under the chin, tilt back the head

**Breathing** – Check for normal breathing for 10 seconds. If they are not breathing call 999, 112 or send another to call and to bring a defibrillator if possible

**CPR** – Start chest compressions and, if trained, combine with rescue breaths – 30 compressions 2 rescue breaths.

Hopefully, soon you will be joined by 'early responders' from the emergency services, including East Anglian Air Ambulance, who will take over responsibility to continue the treatment.

Wherever you are, it is always a good idea to ascertain where an accessible defibrillator is located – in your local community or away from home.

EAAA Community Mission is simple – we want to save more lives and minimise the impact of trauma and medical emergencies in the community.

To all who support our mission – thank you – and, to those yet to do so, there are many ways in which you might help – please get in touch – [info@eaaa.org.uk](mailto:info@eaaa.org.uk)

Together, with your help, we can save more lives.

*Michael White*

---

**Copy deadline for the next issue is 14 November.**

*Please send material to the editor at [BottishamCresset@gmail.com](mailto:BottishamCresset@gmail.com)*

Have you thought of advertising your business in ***The Cresset?***  
**Email the Editor for details: [BottishamCresset@gmail.com](mailto:BottishamCresset@gmail.com)**

## DB Electrical & Building Services

**Dale Badcock**

**07718 122538**

[dbelectricalandbuilding@gmail.com](mailto:dbelectricalandbuilding@gmail.com)

All domestic work undertaken

- Rewiring
- Lighting
- Burglar alarms
- Security Lighting
- Lighting design
- Controls specialist
- Renovations
- Alterations
- Kitchens & Bathrooms

91 Northfield Park

Soham

CB7 5XA

01353 720570

[www.DBElectricalandbuilding.co.uk](http://www.DBElectricalandbuilding.co.uk)



# Rebecca Golding

*now has her new salon  
in Burwell*

*Tues  
9.30am-8pm*

*Thurs  
9.30am-8pm*



*30 Years'  
Experience  
All aspects of  
Hairdressing*

## Tel. 07742 997474

*Free Parking at  
67 Silver Street  
Burwell, CB25 0EF*



## TIM PHILLIPS & Co. Accountants

Independent, specialist service for:  
**Small Business • Self Assessment  
Personal Taxation**

Free initial consultation – no obligation  
**EASY, FREE PARKING**

Copley Hill Business Park, Cambridge Rd., Babraham  
Off A1307 between Wandlebury and Babraham

**Tel: 01223 830044. [www.tpaccounts.co.uk](http://www.tpaccounts.co.uk)**

# Anglian Leisure Bottisham

## GREETINGS!

Anglian Leisure Bottisham would like to take the time to congratulate the successful appointments of our 3 new Duty Managers, Finn, Charlie and Matt!



**Anglian Leisure Bottisham has plenty of new and continuing activities on offer:**

- Car Boot Sale on the last Sunday of every month.
- Hardcourts open for block booking enquiries and casual use.
- More swimming lessons.
- More Judo lessons.
- Aqua Zumba, Yoga and Zumba on Monday, Tuesday and Wednesday respectively.
- Party facilities hire.
- Limited 3G, gymnasium and sports hall slots left for block bookers.

Email address: [bottisham@anglianleisure.co.uk](mailto:bottisham@anglianleisure.co.uk)

**Phone number: 01223 811121**

Website: <https://bottishamvc.org/sports-centre/>

Create an account or membership:

<https://anglianleisure.leisurecloud.net/joinathome/MemberRegistration.aspx?refresh=637955739093968216>

Book an activity: <https://anglianleisure.leisurecloud.net/Connect/mrmLogin.aspx>

## WELCOME TO MAGGIE'S CAMBRIDGE



What is Maggie's? Maggie's provides practical and emotional support to those with cancer, their family, friends and carers. The centre is a warm and welcoming place, with qualified cancer support specialists offering an evidence-based free programme of support which complements medical treatment.

Practical support includes information about eating well, coping with hair loss, or empowering visitors with information about their cancer treatment and benefits entitlements. Or visitors can talk to our psychologists and counsellors, explore their creative side through Art Therapy or get help to manage stress.

Then there is our kitchen table which is at the heart of our centre; a place where visitors can sit and chat with others in a similar situation, or maybe just take some quiet time with a cup of tea.

Examples of support can be anything from Art Therapy to Yoga, Men's Support Group to Menopause workshop, Living with Prostate Cancer to Brain Tumour Support Group. In addition, a cancer support specialist is always available for a chat and to listen. They will always meet a new visitor, help them decide what support best suits their needs and make the appropriate referrals. Read more about our offering on [www.maggiescentres.org](http://www.maggiescentres.org)

Primarily we are a 'drop in' centre, Monday to Friday, 9am-5pm. Drop in anytime, but we are also happy to answer any questions prior to a visit on 01223 249220.

Maggie's, 21 Milton House, Puddicombe Way, Cambridge, CB2 0AD

Email: [Cambridge@maggiescentres.org](mailto:Cambridge@maggiescentres.org) Facebook: [maggiescentrescambs](https://www.facebook.com/maggiescentrescambs)

Twitter: [@maggiescambs](https://twitter.com/maggiescambs) Instagram: [maggiescambridge](https://www.instagram.com/maggiescambridge)



# J&J DRAKE



## Fully approved electrical contractor

- All Work Certificated in Accordance with NICEIC
- Free no obligation quotations
- All aspects of electrical work undertaken such as re-wires, Periodic test and inspections, maintenance calls, New build Installations.
- However small you may consider your job it will be treated with the same attention to detail as every one of our jobs.

## Your Local Electrician

Unit 24, Hall Barn Road Industrial Estate, Isleham, Ely, Cambs. CB7 5RJ

Contact us on: 01638 781567 / enquiries@jandjdrake.co.uk



From  
**£895\***

for a fully  
fitted electric  
garage door.

Gotta get a Garolla.



Garolla garage doors are expertly made to measure in our own UK factories, they're strong and solidly built. The electric Garolla door rolls up vertically, taking up only 8 inches inside your garage, maximising valuable space. Our expert local installers will fit your new door and they'll take away the old one too, so there's no mess.

Give us a call today and we'll come and measure up **FREE** of charge.

**GAROLLA**  
ROLLER  
SHUTTER  
DOORS



[www.garolla.co.uk](http://www.garolla.co.uk)

CALL US TODAY ON:

**01223 902 011**

MOBILE:

**07537 149 128**

**LINES OPEN 7 DAYS A WEEK**

\*Offer valid for openings up to 2.4m wide & including 2 remote controls, 55mm white slats, internal manual

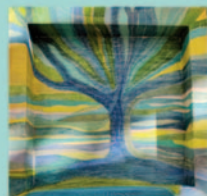


# Swaffham Prior

## *Pop up art gallery and café*

*Ten artists living in the Swaffhams have gathered their work together to help you find some unique and wonderful Christmas gifts, along with delicious home made cakes.*

---



*Oil and watercolour paintings • Textile art • Prints  
Wooden artworks • Sculptures • Jewellery • Crafts  
Wide range of desirable gift ideas*

---

***Saturday 26th & Sunday 27th November***  
***10:30 - 16:00***

***Swaffham Prior Village Hall***

*High Street, Swaffham Prior, CB25 0LD / 07778 666 187*

*Look out for us on 11/12<sup>th</sup> March, 15/16<sup>th</sup> July, 22/23<sup>rd</sup> July and 25/26<sup>th</sup> November 2023*

---





## INDEPENDENT FINANCIAL SOLUTIONS

You know that the State Pension is not enough, but you don't know what it will provide!  
You want to save for your retirement, but you don't know what you will need!  
You wish to protect your family against financial disaster, but don't know what cover you require!  
You need to make your money work hard, but don't know which option is best for you!  
You would like to reduce your tax bill, but you don't know how!

**Whether you own a company, are self employed, employed or retired, we can help!**

**We don't believe in adding to your problems.**

**We believe in clear and simple solutions.**

Let us provide you with an **INDEPENDENT**  
review of your financial situation.

**The value of investments and income from them may go down.  
You may not get back the original amount invested.**

*Tax treatment is based on individual circumstances  
and may be subject to change in the future*

**Tel: 01638 615343 or Fax: 01638 615342  
E-Mail: [qc@independent-financialsolutions.co.uk](mailto:qc@independent-financialsolutions.co.uk)  
Website: [www.independent-financialsolutions.co.uk](http://www.independent-financialsolutions.co.uk)**

Newnham Farmhouse, 16 Low Road, Burwell, Cambs, CB25 0EJ  
Partners: Quentin Cooke (authorised Independent Financial Adviser) & Alison Cooke



# **My Village Handyman Services Ltd**

- DIY Repairs & Odd Jobs
- Painting & Decorating
- Tiling & Flooring
- Gardening & Landscaping
- Patios & Decking
- Fencing, Sheds + Garden Studios
- Kitchen & Bathroom Installation
- Gutter Clear and Jet Washing
- Leaking Taps & Plumbing Jobs
- Carpentry & Repairs
- Light Fittings, Sockets & Electrical Works
- Studio & Summer House Builds
- Brickwork & Small Builds
- New Doors or Locks
- Security & Garden Lighting



**If your job is not listed, get in touch I'm sure we can help**

Free no obligation quotes and advice provided

Your very local Handyman

Contact us to arrange a visit or quote

Call: **07500876376** or **01223 881700**

Email: **info@myvillagehandyman.com** Web: **myvillagehandyman.com**

# K.J.P.

## Building/Maintenance



Including:

Design, landscapes, patios, fencing,  
gardening, decking, painting,  
decorating, tiling, all interior work,  
etc.

**Tel: 01223 812021 or  
mobile 07799 504043**



## SANICLEAN

DRAIN & PLUMBING SERVICES

**R. BRISTLEY** Est. 1974

9 Collings Place, Newmarket

- *Drains Unblocked Fast*
- *Toilets, Baths and Sinks*
- *Guttering and Downpipes*
- *Drain repairs and CCTV Surveys*
- *High Pressure Water Jetting*
- *Domestic and industrial*
- *All Work Guaranteed*

**Newmarket (01638) 662439**

**Mobile 07970 038404**

**[www.rbristley.co.uk](http://www.rbristley.co.uk)**

**FREE  
Estimates &  
Advice**



**BRADSTONE**

- All Driveways & Block Paving
- Site & Garden Clearance
- Driveway Cleaning & Sealing
- Fencing, Trellis Work & Decking
- Patios & Paths
- Turfing & Seeding
- Concrete Crushing
- Grab Hire & Digger Hire

**[amsbuildingandlandscaping.co.uk](http://amsbuildingandlandscaping.co.uk)**

**OFFICE: 01638 721 893 | SITE: 07789 261 266**

# Rayment's

• Vehicle Servicing & Repairs •

## Diagnostic Specialist

MOTs | Servicing | Tyres

Cambelts | Brakes | Air Con

8 Townsend, Soham, Ely, CB7 5DB

# 01353 655136

[raymentsvehiclerepairs@outlook.com](mailto:raymentsvehiclerepairs@outlook.com)

[www.raymentsvehiclerepairs.co.uk](http://www.raymentsvehiclerepairs.co.uk)

# HARRISONS OF BURWELL LTD

## Plumbing and Heating

**FREE ESTIMATES GIVEN**

Gas Boiler Servicing

**Clarence House, 7 Ness Road, Burwell, Cambs CB25 0AA**  
**Telephone: Newmarket 01638 742873 - Mobile 07932 773515**

**email: [harrisonsofburwell@gmail.com](mailto:harrisonsofburwell@gmail.com)**

Gas Safe Registered

# HAYDEN

**THE CLEANING SPECIALIST**

Merrywood  
8 Lode Rd. Bottisham CB25 9DJ  
01223 813766 or 07919561665  
Email: [hayden.woodruff@btinternet.com](mailto:hayden.woodruff@btinternet.com)

WOULD YOU LIKE YOUR CARPETS  
OR UPHOLSTERY CLEANED?

HAYDEN IS LOCAL TO THE AREA,  
OFFERING FREE QUOTATIONS  
AND ADVICE

WE ALSO CLEAN WINDOWS WITH  
OUR NEW REACH AND WASH  
SYSTEM OR TRADITIONAL, YOUR  
CHOICE

## k-domestic electrical solutions



Complete installations & rewires

Small and large alterations

Lighting

Internal & External work

PAT testing

Periodic Inspection & Reports

Full Inspection, Testing,  
Verification & Certificate issue

LED

Under Floor Heating

Voltage Optimization

your **local** electrical service of choice and recommendation

**Karl Howe**

**01638 610438 M: 07541 008613**

Email: [enquire@k-elecsolutions.com](mailto:enquire@k-elecsolutions.com) Website: [www.k-elecsolutions.com](http://www.k-elecsolutions.com)

Fully qualified Part P and 17th Edition

**City &  
Guilds**  
Qualified





# NEED A NEW FENCE ?

- Reliable local company. Established 2007.
- Over 1000 local installations.
- Choice of colours & sizes.
- NEVER PAINT A FENCE AGAIN.
- Will withstand storm force winds.
- 25 years guaranteed product.
- Numerous local testimonials available.



For a **free, no obligation**, site survey and quote.

Call us now on 01223 811160

[www.colourfencecambs.co.uk](http://www.colourfencecambs.co.uk)

## Bottisham Vehicle Services Ltd.

Reliable, Friendly, Professional

Service and repairs to all makes,  
MOT testing, tyres, air conditioning  
Courtesy car available  
Local collection and delivery

10 Tunbridge Lane, Bottisham, Cambridge CB25 9DU  
01223 811919 • [simon@bvsltd.net](mailto:simon@bvsltd.net) • [www.bvsltd.net](http://www.bvsltd.net)



## *'Your Friendly, Local Wood Burning Stove Specialist'*



### **VISIT OUR SHOWROOM!**

**Whitelands Farm  
Newmarket Road  
Bottisham  
Cambridge  
CB25 9BD**

**Mon – Closed**

**Tues – 12.30 – 14.30\***

**Wed - Appointment Only**

**Thurs – 12.30 – 14.30\***


**Fri - Closed**

**Sat – Appointment Only**

**Sun – Closed**

**(\*School holidays by  
appointment only)**

**- Email & telephone enquiries  
dealt with Monday – Friday  
09.00am – 5.00pm**

 **01223 703184**

Email: [sarah@cambridgestoves.co.uk](mailto:sarah@cambridgestoves.co.uk)

[www.cambridgestoves.co.uk](http://www.cambridgestoves.co.uk)

**CALL NOW FOR YOUR FREE, NO  
OBLIGATION SURVEY AND  
QUOTATION, OR MAKE AN  
APPOINTMENT TO VISIT OUR  
SHOWROOM**

**ALL ASPECTS OF BUILDING WORKS TO  
YOUR FIREPLACE UNDERTAKEN**

**FAST, RELIABLE AND EFFICIENT  
SERVICE CARRIED OUT BY QUALIFIED  
HETAS ENGINEERS**

**LARGE SELECTION OF WOOD  
BURNING STOVES ON DISPLAY**



# MOBILITY EQUIPMENT

**STAIRLIFTS, SCOOTERS, WHEELCHAIRS, RISING CHAIRS AND  
BEDS, WALKERS, TOILET & BATHING AIDS, KITCHEN &  
HOUSEHOLD AIDS, CONTINENCE CARE, FOOTWEAR**

**SPARES, SERVICE, HIRE OF EQUIPMENT  
HOME VISITS AVAILABLE  
FRIENDLY AND CONSIDERATE SERVICE GUARANTEED**



**SCOTSDALES GARDEN CENTRE  
HORNINGSEA  
CB25 9JG  
01223 863908  
[www.orchard-mobility.co.uk](http://www.orchard-mobility.co.uk)**

**Monday to Saturday 9.00 – 5.00**

## **Bottisham Parish Council**

### **CHAIR**

JON OGBORN

### **VICE CHAIR**

JOHN WILSON

### **PARISH COUNCILLOR**

HILDA BUCHANAN

NADENE CUNDELL

LINO DI LORENZO

VICTORIA MARSH

STEVEN O'DELL

MARK OVERTON

J. SWAMINATHAN

LAURIE VAN SOMEREN

NEIL WINKCUP

### **DISTRICT COUNCILLO**

CHARLOTTE CANE

JOHN TRAPP

### **COUNTY COUNCILLO**

ALAN SHARP

### **PARISH CLERK**

JONATHAN GILES

## **BOTTISHAM COMMUNITY LIBRARY ASSOCIATION**

### ***LIBRARY OPENING HOURS***

#### **TUESDAYS**

**3.00-5.00 and 6.00 - 8.00**

#### **WEDNESDAYS**

**10.00-11.30**

#### **THURSDAYS**

**3.00-5.00**

#### **FRIDAYS**

**6.00-8.00**

#### **SATURDAYS**

**10.00-12.00am**

*Working in Partnership with the  
County Library Service.*

# Useful Information

<b>Bottisham Website:</b>	.....www.bottisham-pc.gov.uk
<b>Holy Trinity Church:</b> Revd Sue Giles	.....812726
Stuart Field, Churchwarden	.....01223 604019
<b>Roman Catholic Priest:</b> Monsignor Eugène Harkness. Parish of St Philip Howard	.....01223 211235
<b>RE:NEW/Lode Chapel:</b> Rev. Alan Brand	.....01223 812558
<b>Bottisham Surgery:</b>	.....
Enquiries and Appointments	.....810030
Out of Hours only - Urgentcare Cambridge	.....111
<b>Bottisham Library:</b>	.....812354
Library hours: Monday Closed; Tuesday 3-5pm and 6-8pm; Wednesday 10am-12.00noon	
Thursday 3-5pm; Friday 6-8pm; Saturday 10am-11.30am	
<b>Cambridgeshire Police HQ:</b>	.....01480 456111
<b>Cambridgeshire Police:</b>	.....(NON-URGENT MATTERS) ring 101 - In EMERGENCIES ring 999
Local East Cambs Policing info. www.cambs.police.uk/Neighbourhood-Policing/East-Cambs	
<b>1st Bottisham Rainbows/1st Bottisham Brownies:</b> Kay Pearce	.....811055
<b>Bottisham &amp; District Gardening Club:</b> Secretary: Julia Green	.....811467
<b>Bottisham Bowling Club:</b> Peter Clowes, Secretary	.....811565
<b>Bottisham Carpet Bowls Club:</b> Nora Watson	.....812121
<b>Bottisham Community Primary School:</b>	.....811235
<b>Bottisham Cricket Club:</b> Chairman: Will Allen	.....Chairman@bottlodecricket.co.uk - 07713 007757
<b>Bottisham Local Charities Trustees:</b> secretary - Jonathan Barrett	.....07920 425154
<b>Bottisham Pharmacy:</b>	.....812321
<b>Bottisham Pool Association:</b> Manager - Harry Bubb	.....811121
<b>Bottisham Royal British Legion Branch:</b> Secretary. Peter Walker	.....811402
Branch Chairman: Dave Frost	.....www.Britishlegion.org.uk/branches/bottisham
<b>Bottisham Scout Group:</b> Group Contact: Linda Jones	.....813040
<b>Bottisham Community Sports and Social Club:</b> Secretary Bev Clowes,	
Bottishamcsasc@gmail.com	.....812063
<b>Bottisham Village College, School:</b>	.....811250
Evening Classes, Clubs and Youth Club Information	.....811372
<b>Bottisham W.I.:</b> Secretary - Jenn White • mrandjw@btinternet.com	.....811600
<b>Bottisham Youth Football Club:</b> Adam Bridgland	.....adambridgland@hotmail.com - 07764 488599
<b>Cambridgeshire County Councillor:</b> Alan Sharp	.....01638 507485/07794292941
Alan.sharp@cambridgeshire.gov.uk	
<b>East Cambridgeshire District Offices:</b>	.....01353 665555
<b>East Cambridgeshire District Councillors:</b> Charlotte Cane 34 Swaffham Road, Reach	.....07976 607512
John Trapp 104 Commercial End, Swaffham Bulbeck	.....01223 812120
<b>Girlguiding Bottisham District:</b> Cambs East County office • www.cambseastguides.org.uk	.....01223 813917
<b>Parish Council Chairman:</b> Jon Ogborn	.....07486 372780
<b>Parish Council Clerk:</b> Jonathan Giles	.....clerk@bottisham-pc.gov.uk - 07789 012761
<b>Queen's Court Day Centre:</b>	.....811905
<b>MP for Cambs South East Constituency:</b>	
Lucy Frazer, House of Commons, London SW1A 0AA	.....
E. lucy.frazer.mp@parliament.uk W. www.lucyfrazer.org.uk	
<b>Cambridgeshire Trading Standards Helpdesk:</b>	.....0845 3030666
<b>Milton Road Tip:</b> Apr to Sept - Weekdays 9.00am-8.00pm: Weekends 9.00am-6.00pm	.....860674
Oct to Mar - 9.00am-4.00pm	
<b>CRESSSET Editor:</b>	.....email: BottishamCresset@gmail.com
<b>Treasurer, Advertising rates and payment:</b> Rhona Walker, 94 High Street, Bottisham	.....811402
<b>Distribution:</b> Ian & Helen Cole	.....812573
<b>Design/Artwork:</b> ONG (Old Newton Graphics) • www.codge.com	.....01449 675548

**The Cresset:** While every effort is made to ensure accuracy we cannot accept liability for any mistakes or misprints. The views of, or any opinions expressed, are **not** those of the EDITOR. The Editor cannot accept any responsibility for statements made in advertisements.

# **MANCHETTS**

**Car Truck & Van Centre**



# **Van Hire from £49**

**01638 661113**

***www.manchetts.co.uk***

*1 Victoria Way Studlands Industrial Estate Newmarket Suffolk CB8 7SH*

# E.C. AUTOCARE

(Est. 1980)



**SERVICING & REPAIRS**  
**Cars & Light Commercial**  
**Diesel & Petrol**



## MOT TESTING STATION

**Servicing to all makes of Cars  
& Light Commercial**

-  **ENGINE MANAGEMENT DIAGNOSTICS**
-  **TYRE - BRAKES - EXHAUSTS**
-  **AIR CONDITIONING SERVICING**
-  **GEARBOX SPECIALISTS** MANUAL & AUTOMATIC

**FAST, FRIENDLY, FAMILY BUSINESS**

**56 HIGH STREET, BOTTISHAM**

Also at

**A1303 SERVICE STATION, BOTTISHAM**  
**(behind Brian McKay)**

**Tel. 01223 811122 or 01223 812357**

